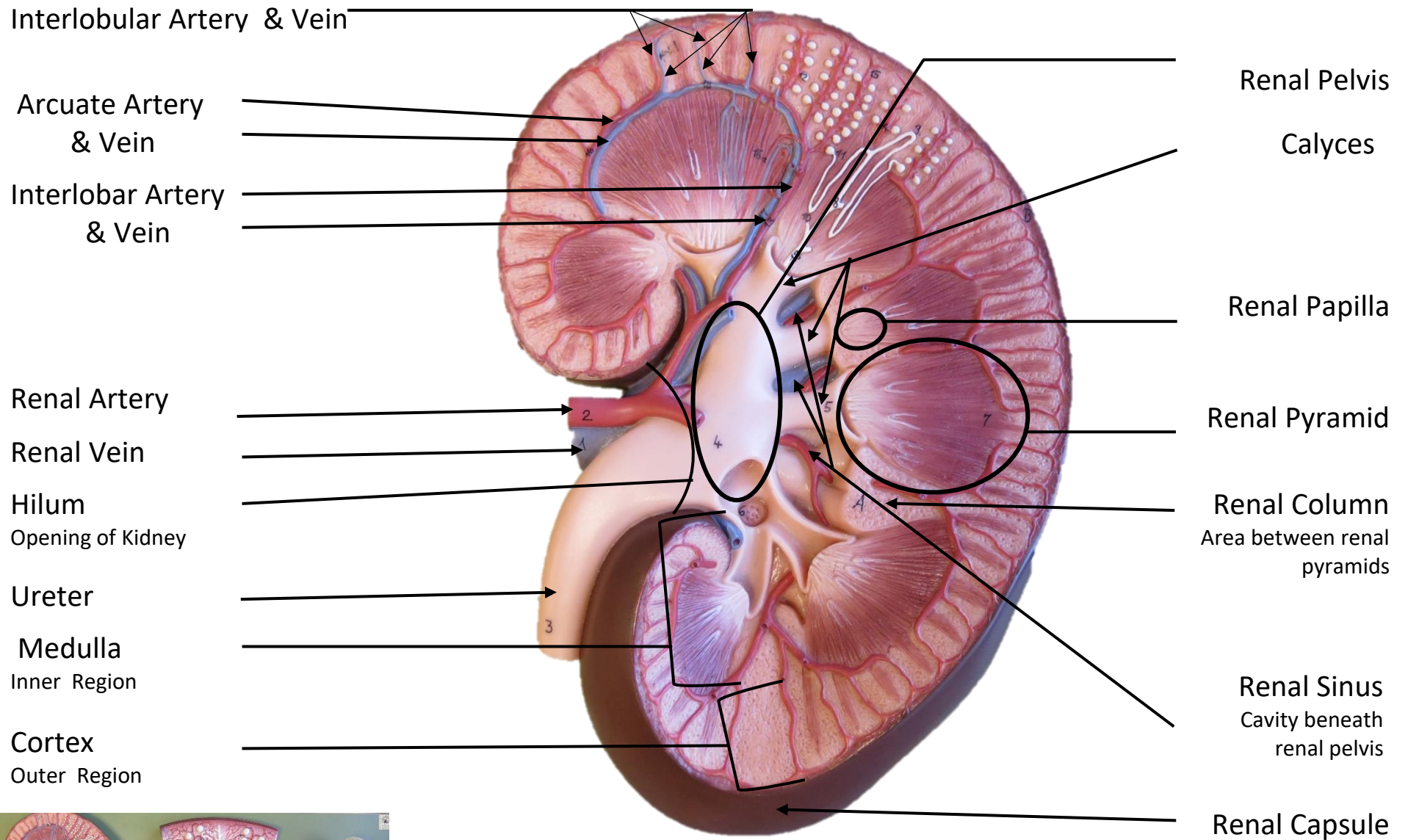


3 PART KIDNEY MODEL

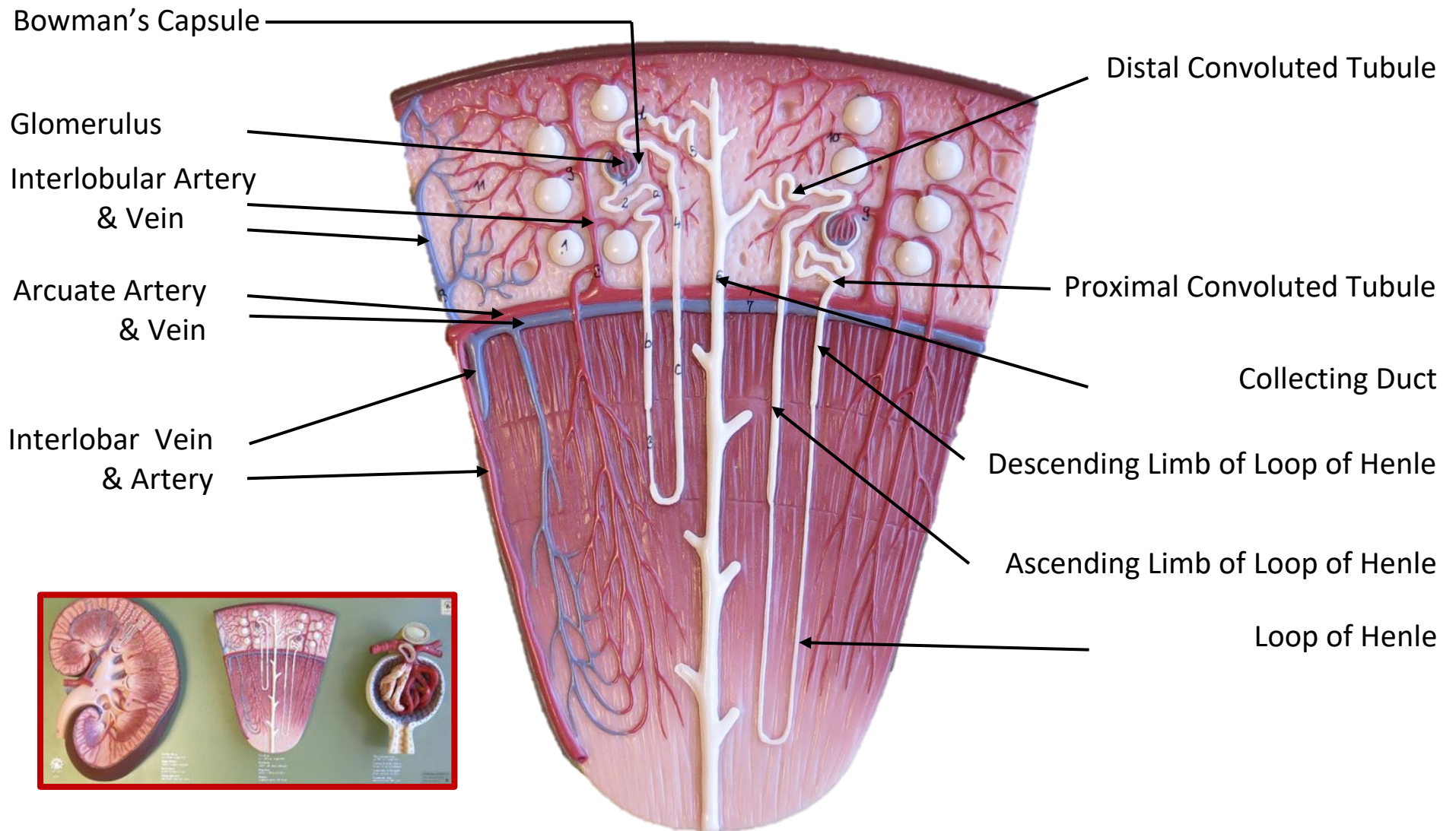


Whole Kidney



3 PART KIDNEY MODEL

Nephron



3 PART KIDNEY MODEL

Corpuscle

Afferent Arteriole

Efferent Arteriole

Juxtaglomerular Apparatus

Visceral Layer

Of the bowman's capsule made up of

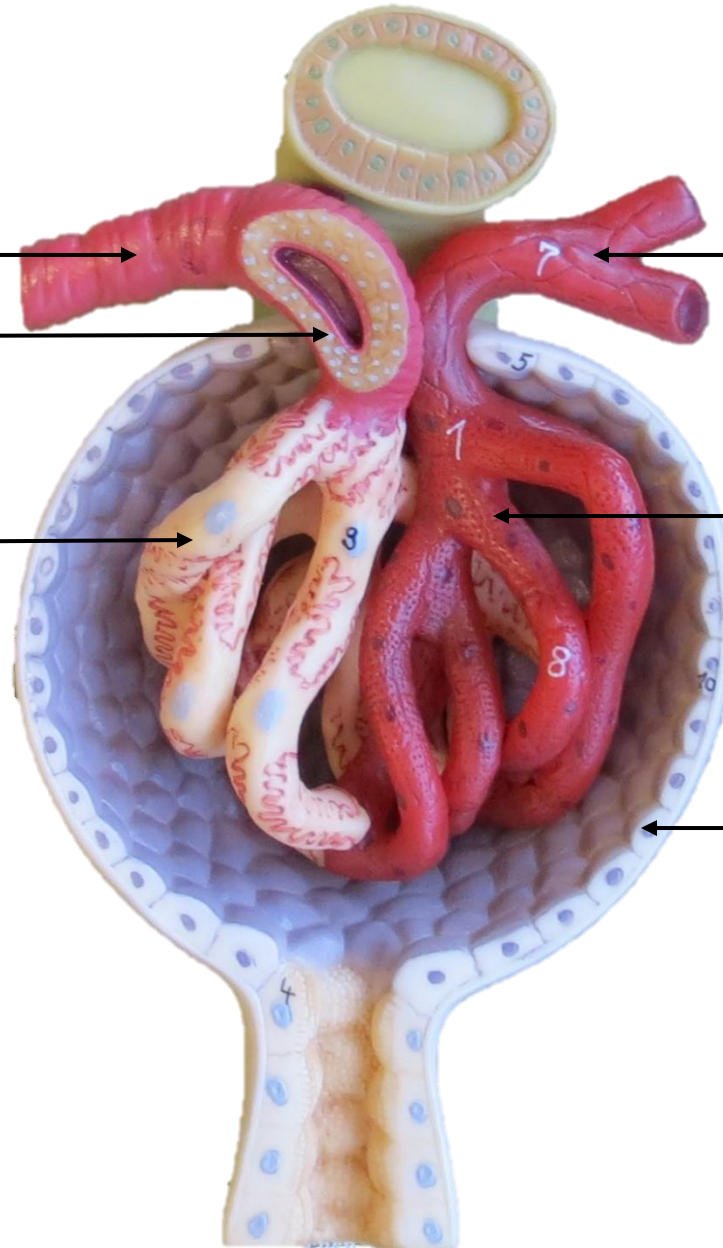
Podocytes

Glomerulus

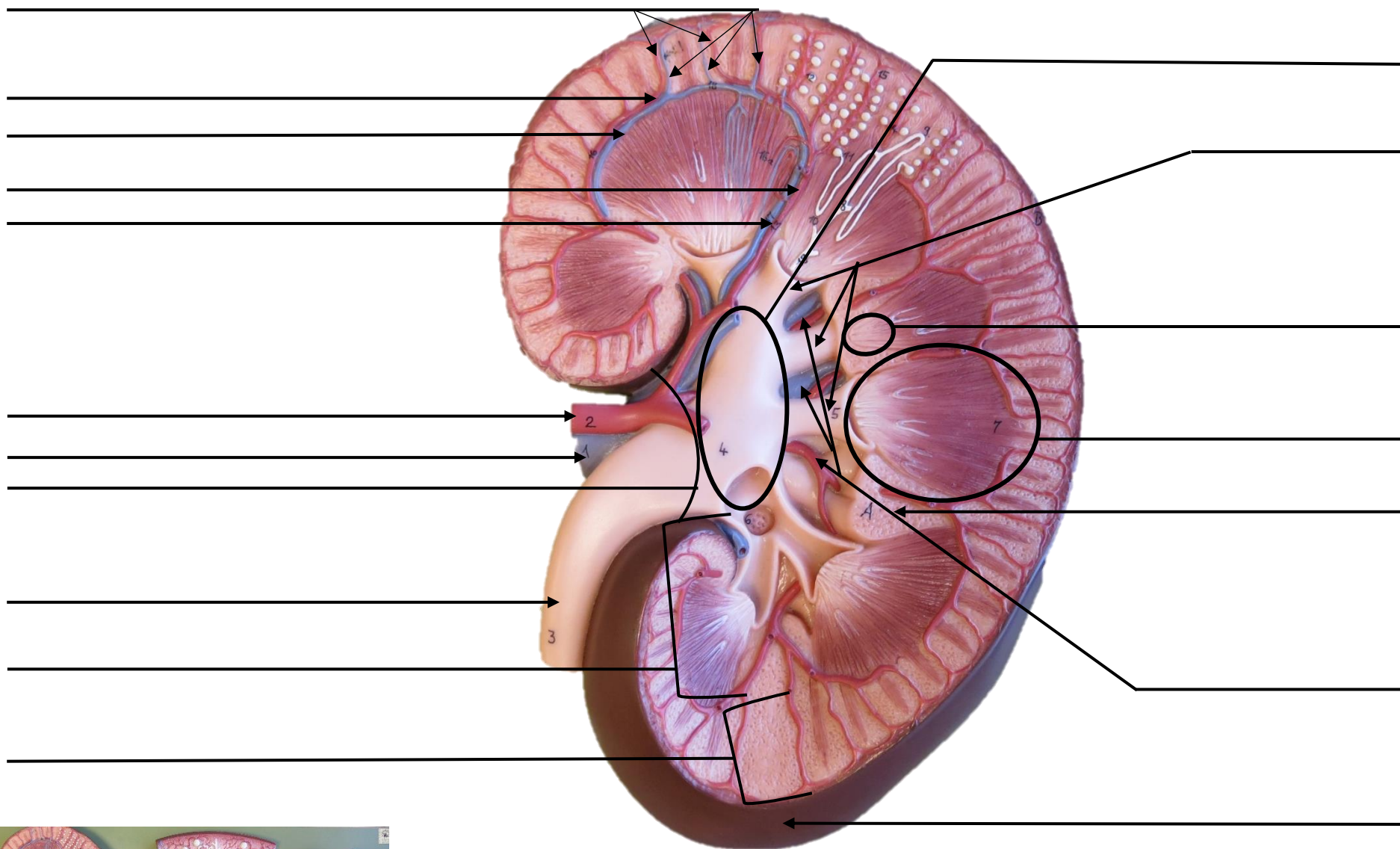
Bowman's Capsule

Parietal Layer

Of the bowman's capsule



3 PART KIDNEY MODEL

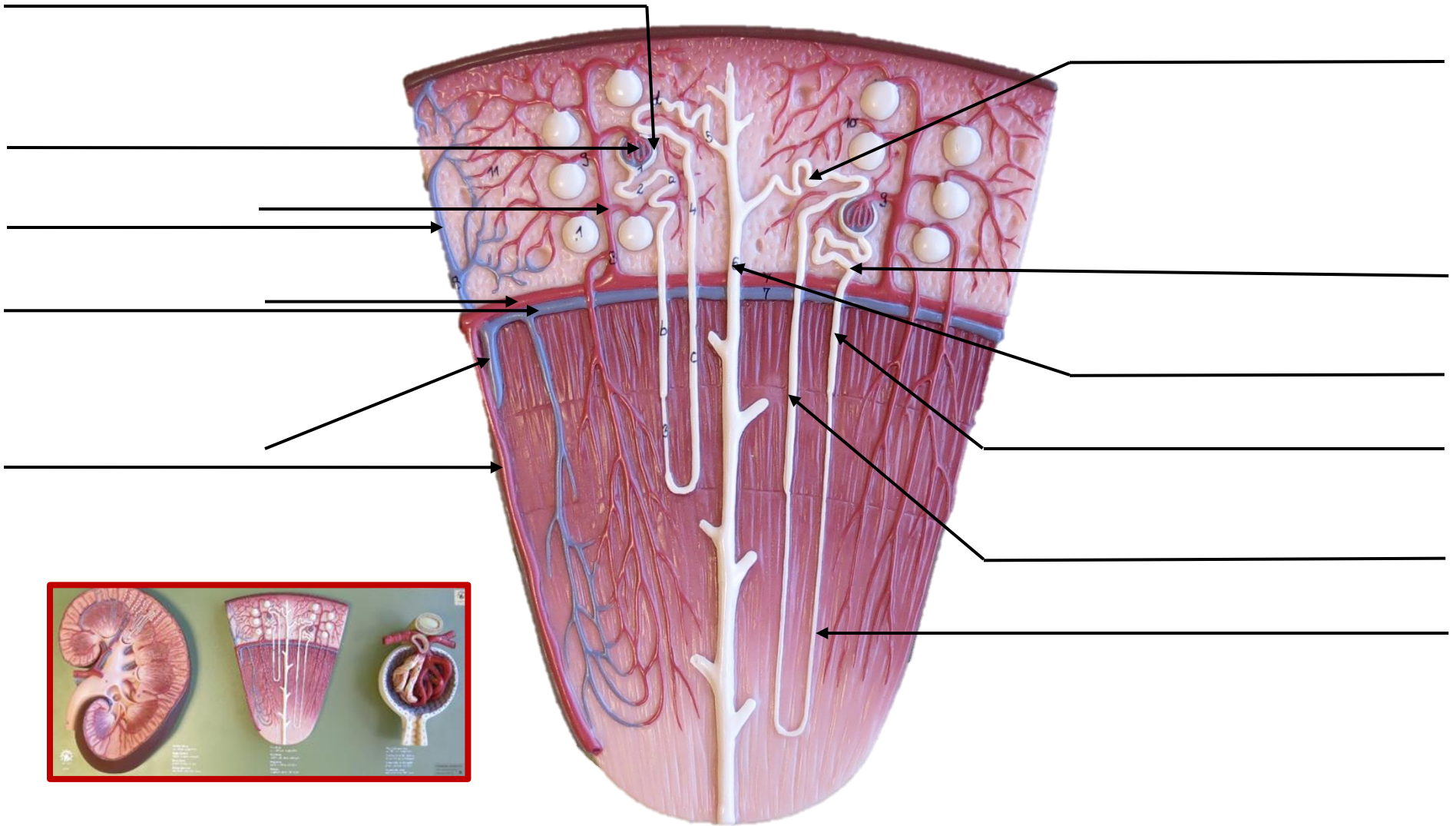


Whole Kidney



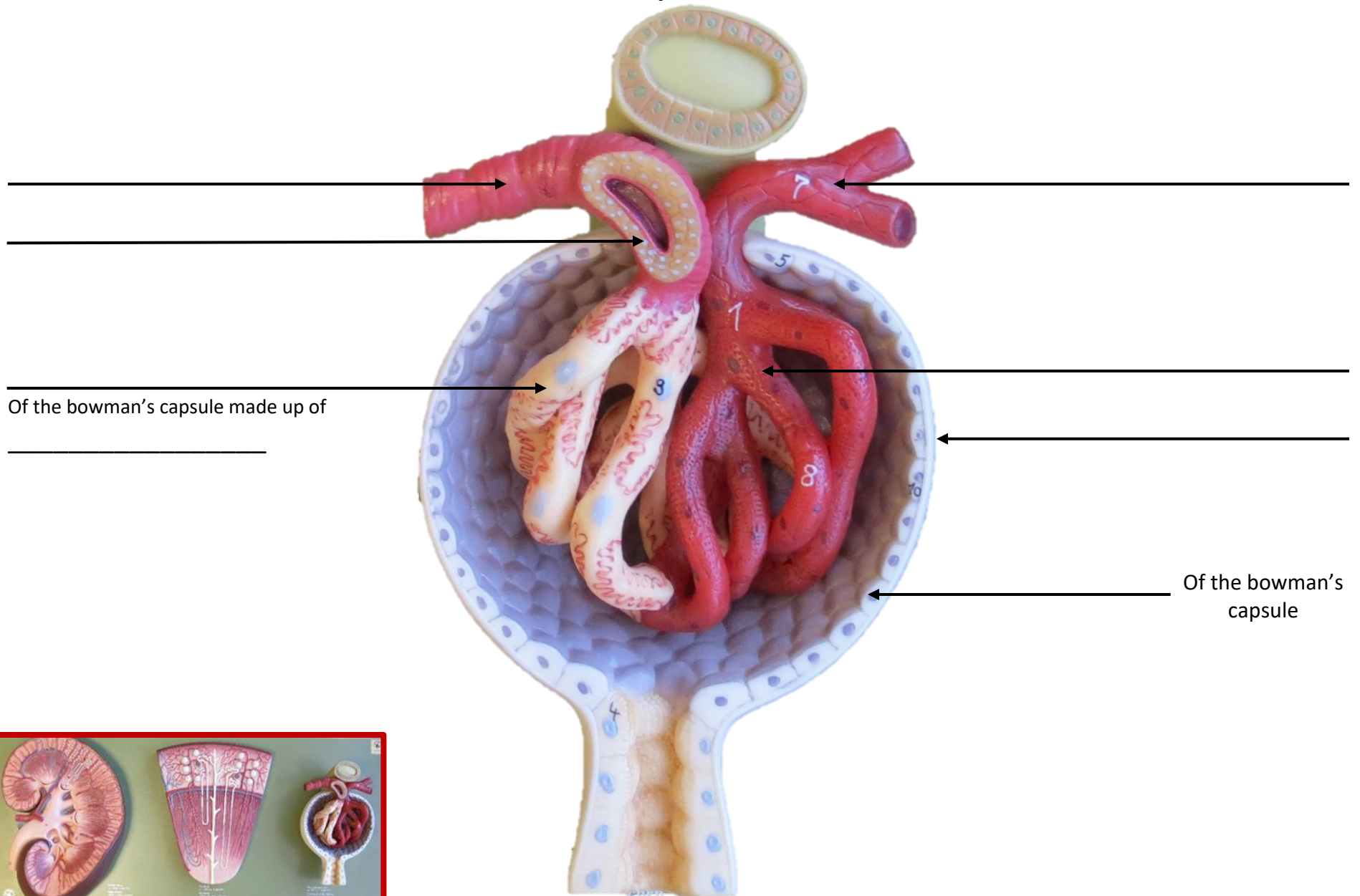
3 PART KIDNEY MODEL

Nephron



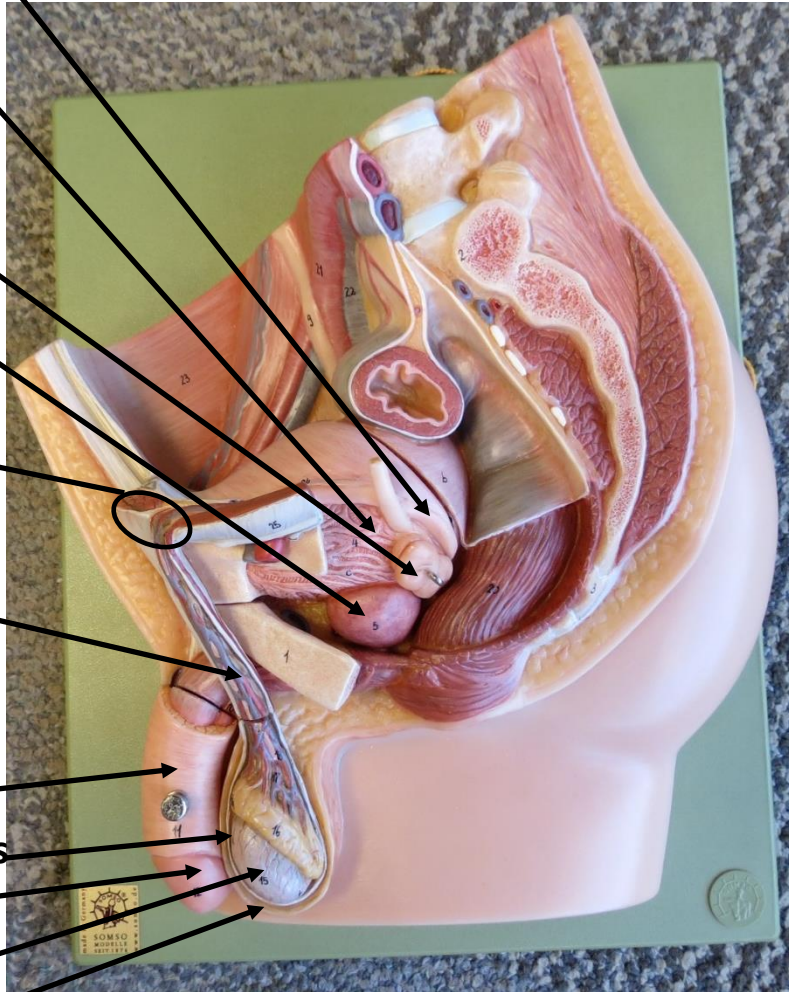
3 PART KIDNEY MODEL

Corpuscle

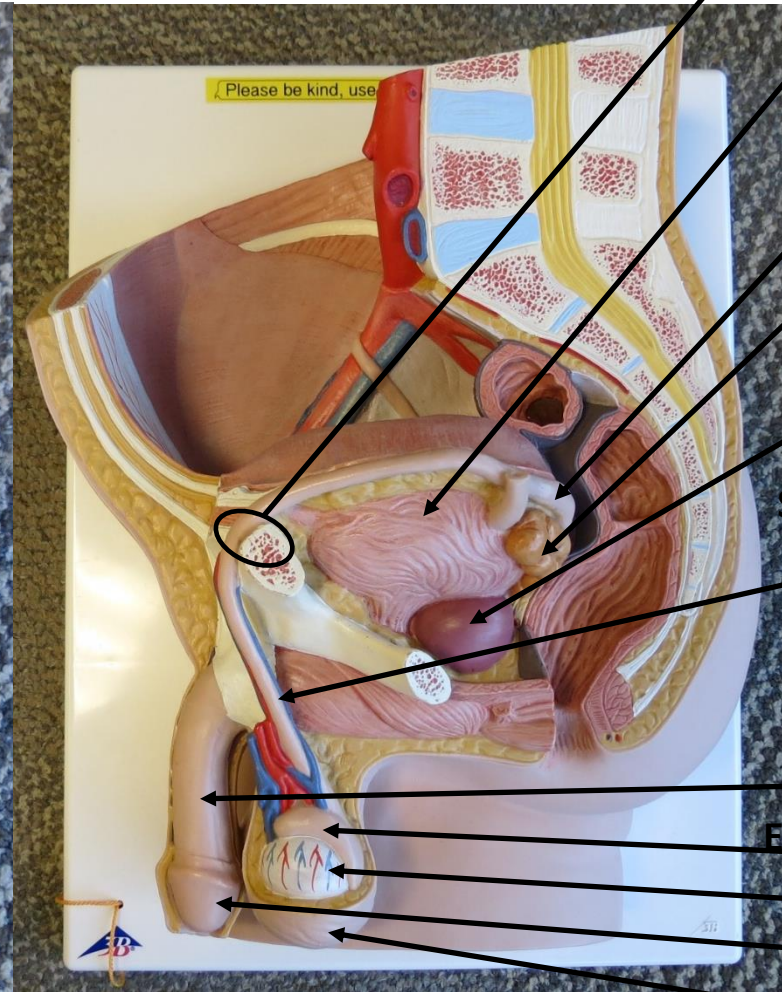


MALE REPRODUCTIVE MODELS

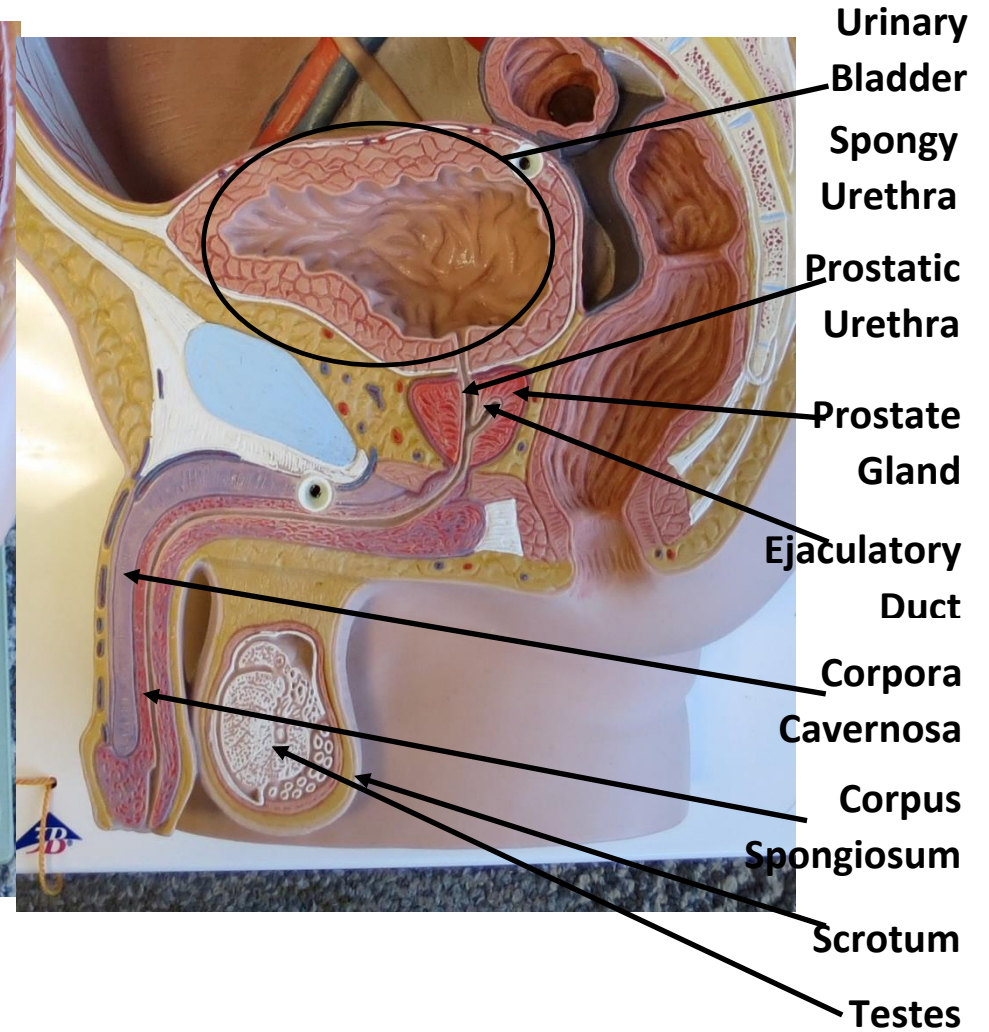
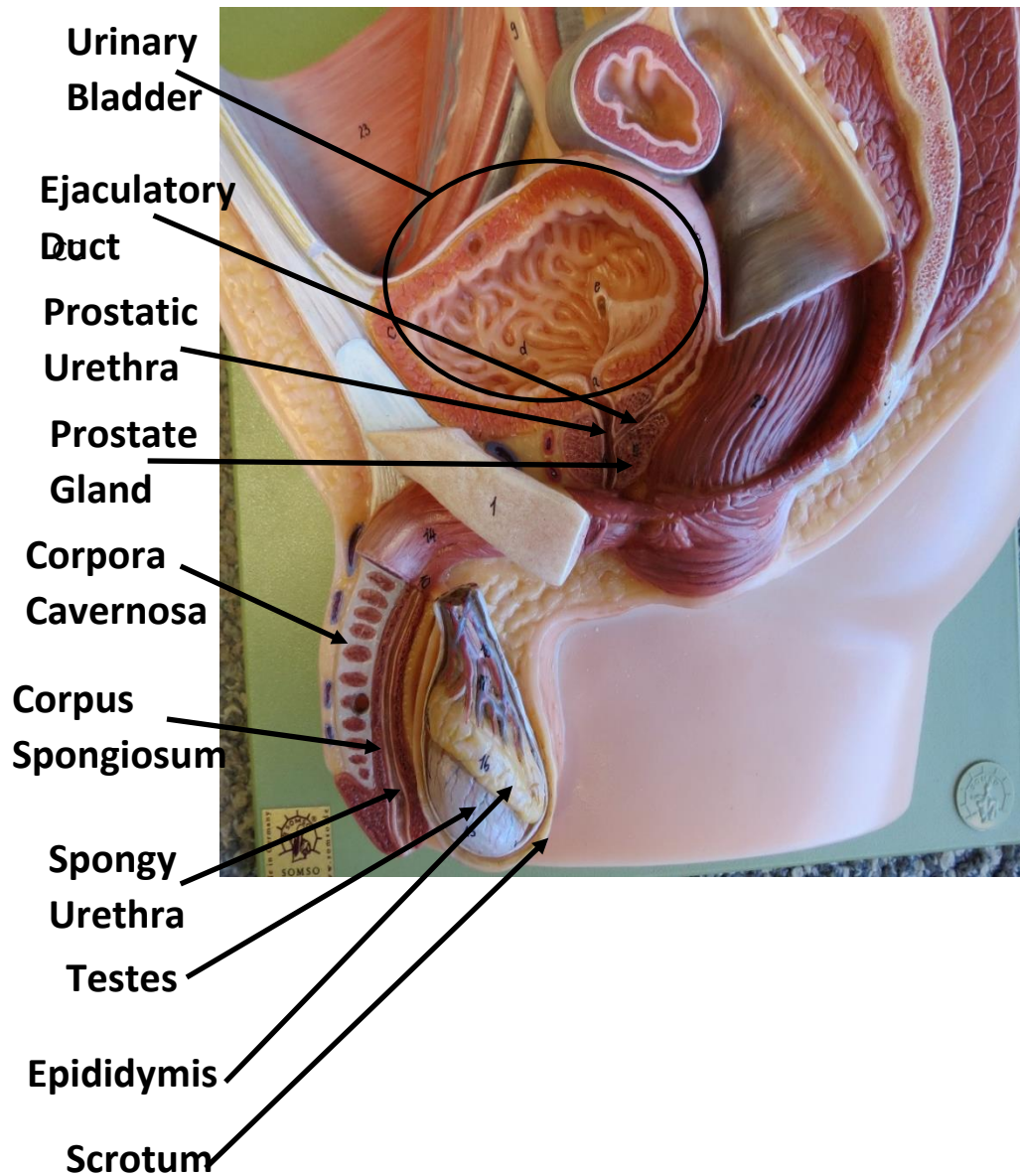
Ductus
Deferens
Urinary
Bladder
Seminal
Vesicle
Prostate
Gland
Inguinal
Canal
Spermatic
Cord with
Testicular
Artery &
Vein
Penis
Epididymis
Glans
Testes
Scrotum



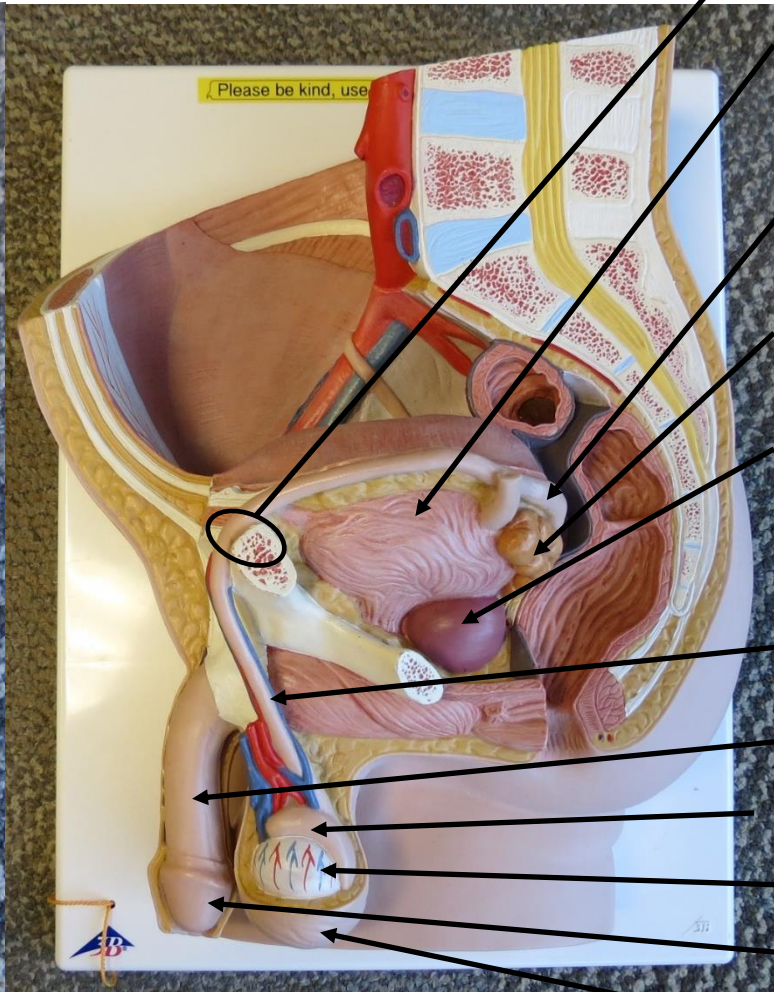
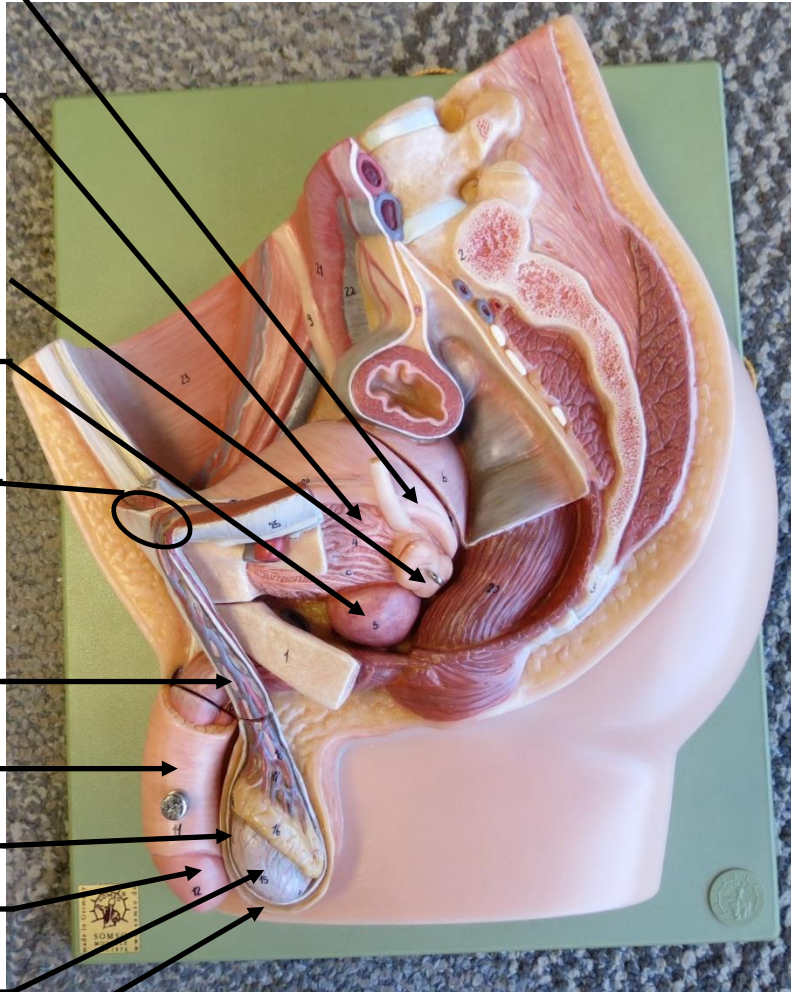
Inguinal Canal
Urinary
Bladder
Ductus
Deferens
Seminal
Vesicle
Prostate
Gland
Spermatic
Cord with
Testicular
Artery &
Vein
Penis
Epididymis
Testes
Glans
Scrotum



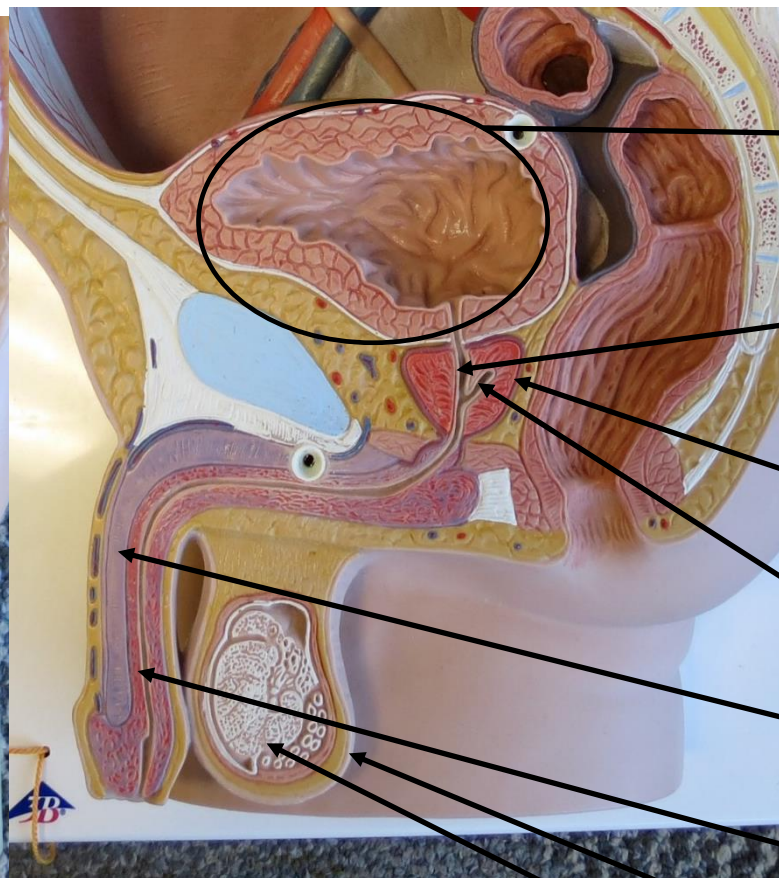
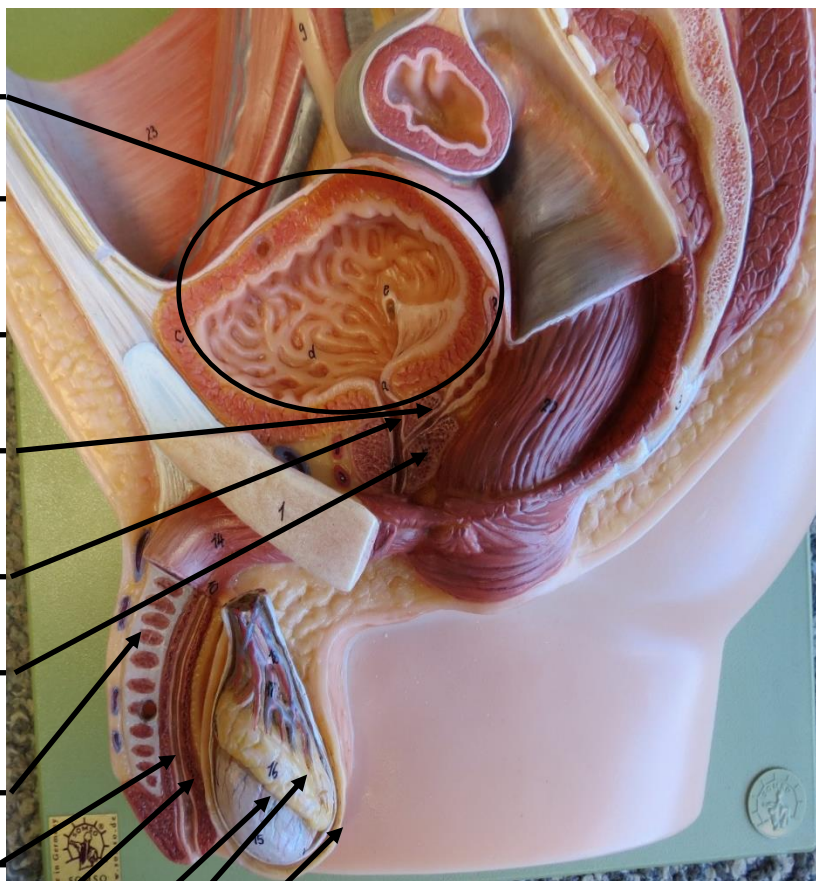
MALE REPRODUCTIVE MODELS



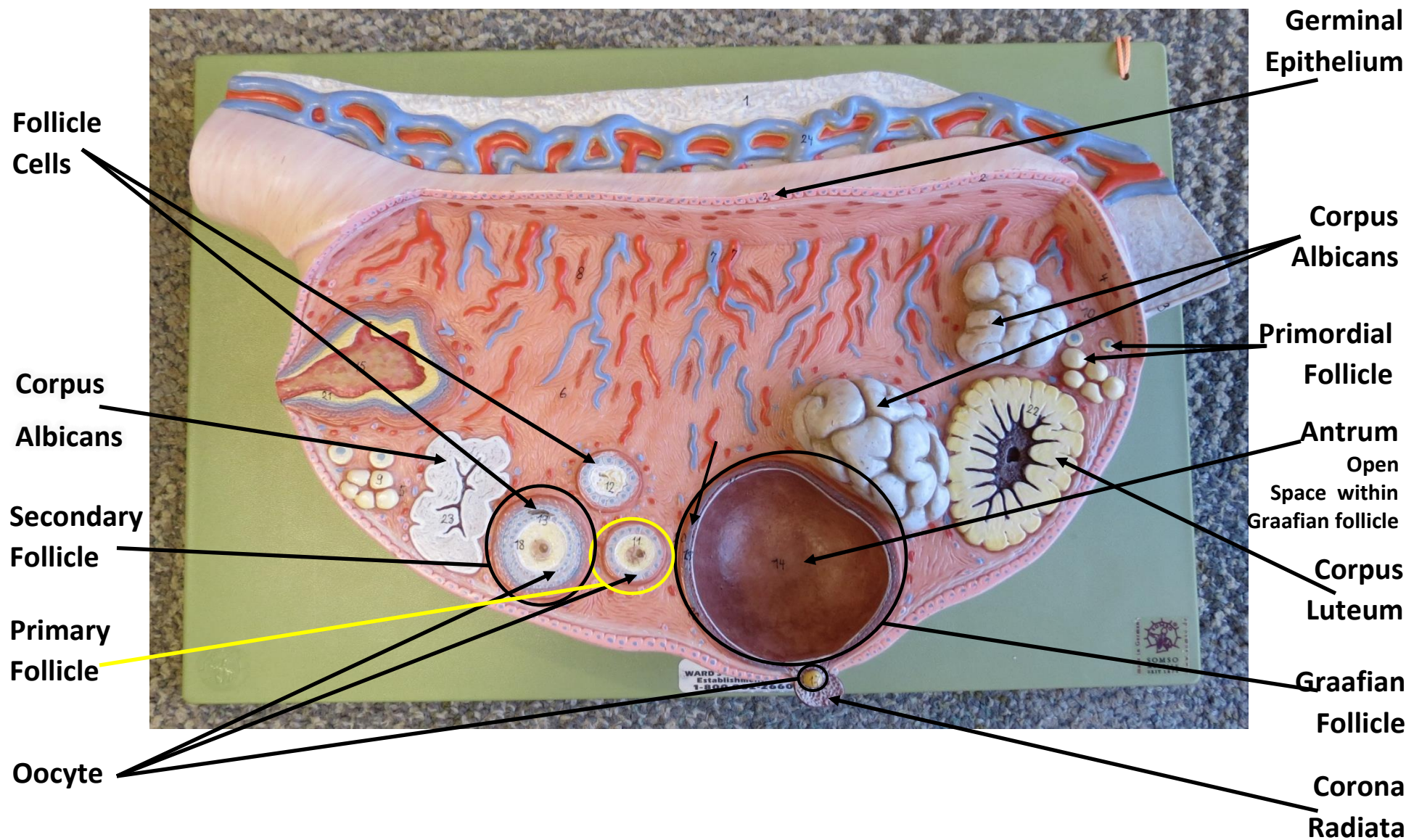
MALE REPRODUCTIVE MODELS



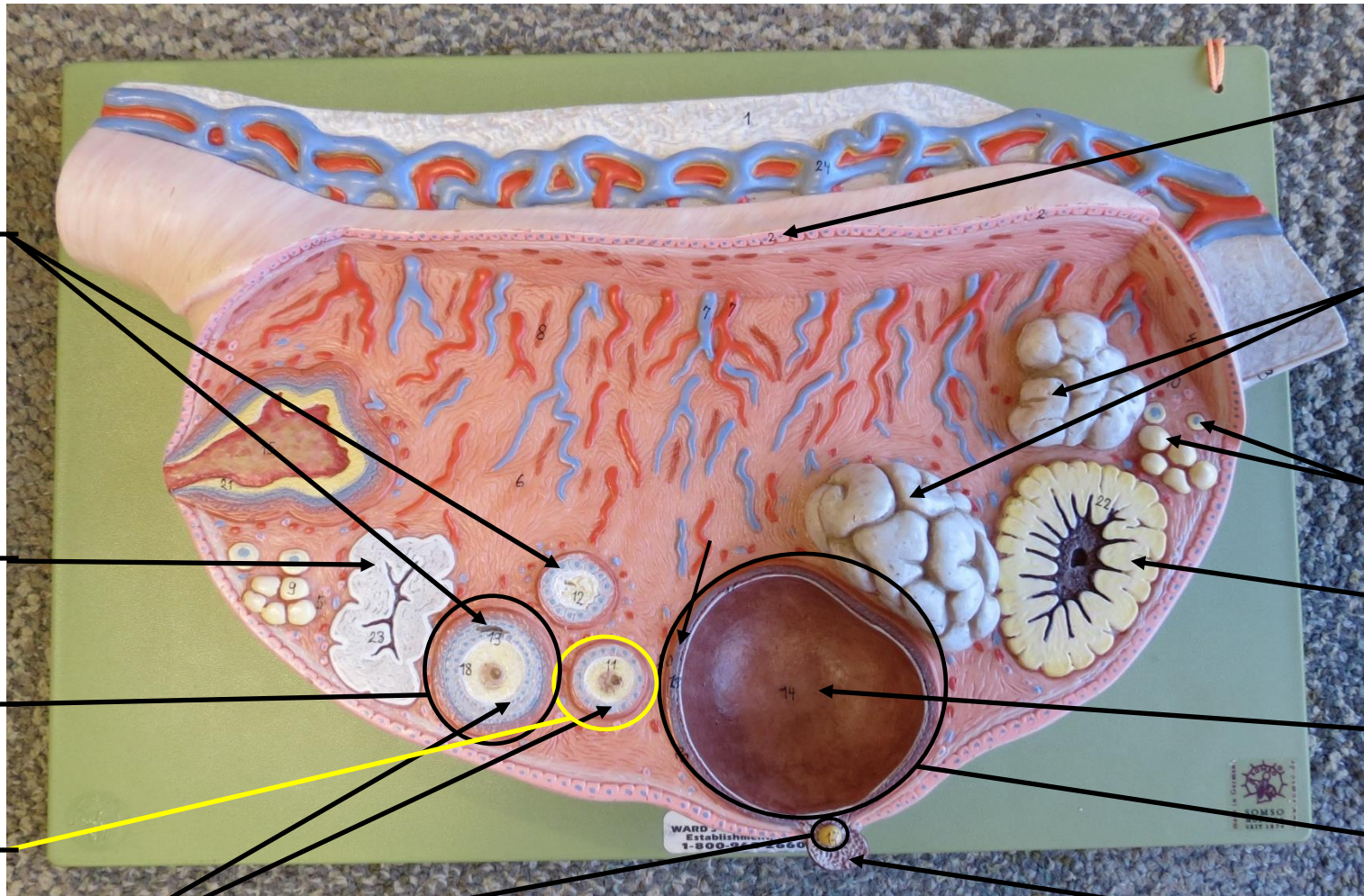
MALE REPRODUCTIVE MODELS



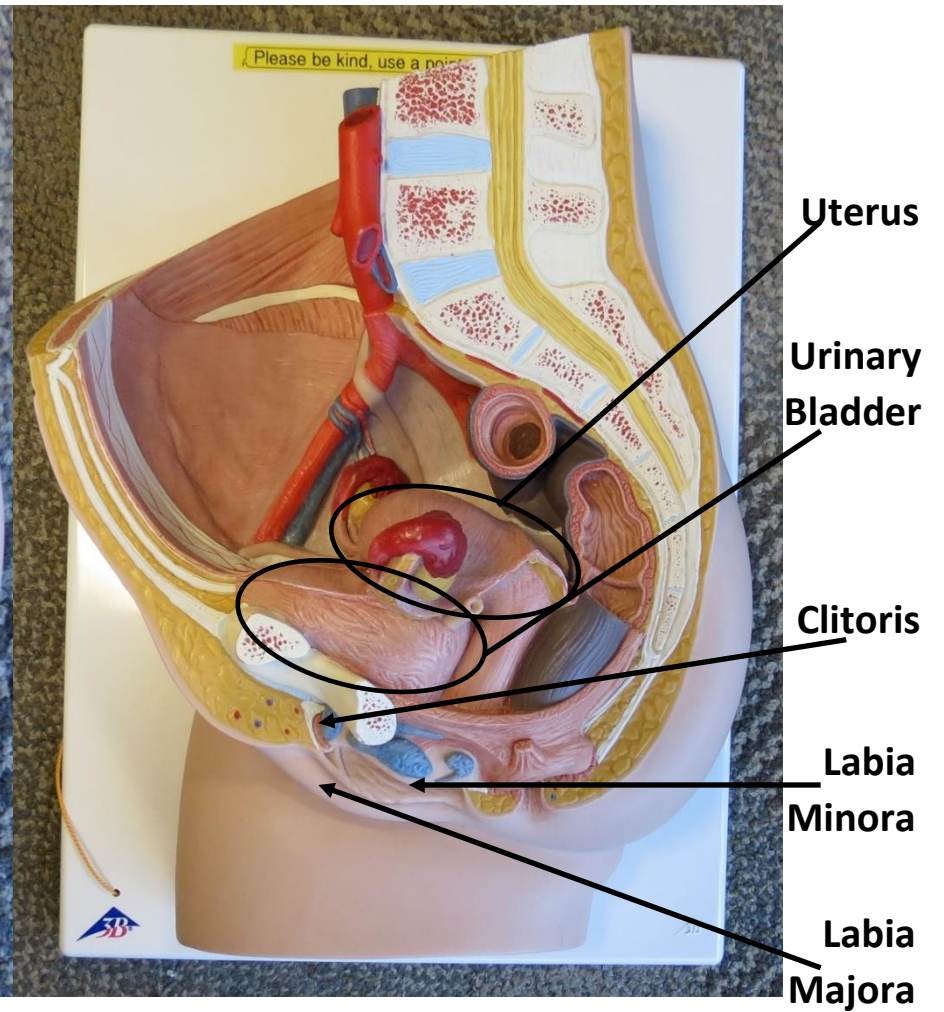
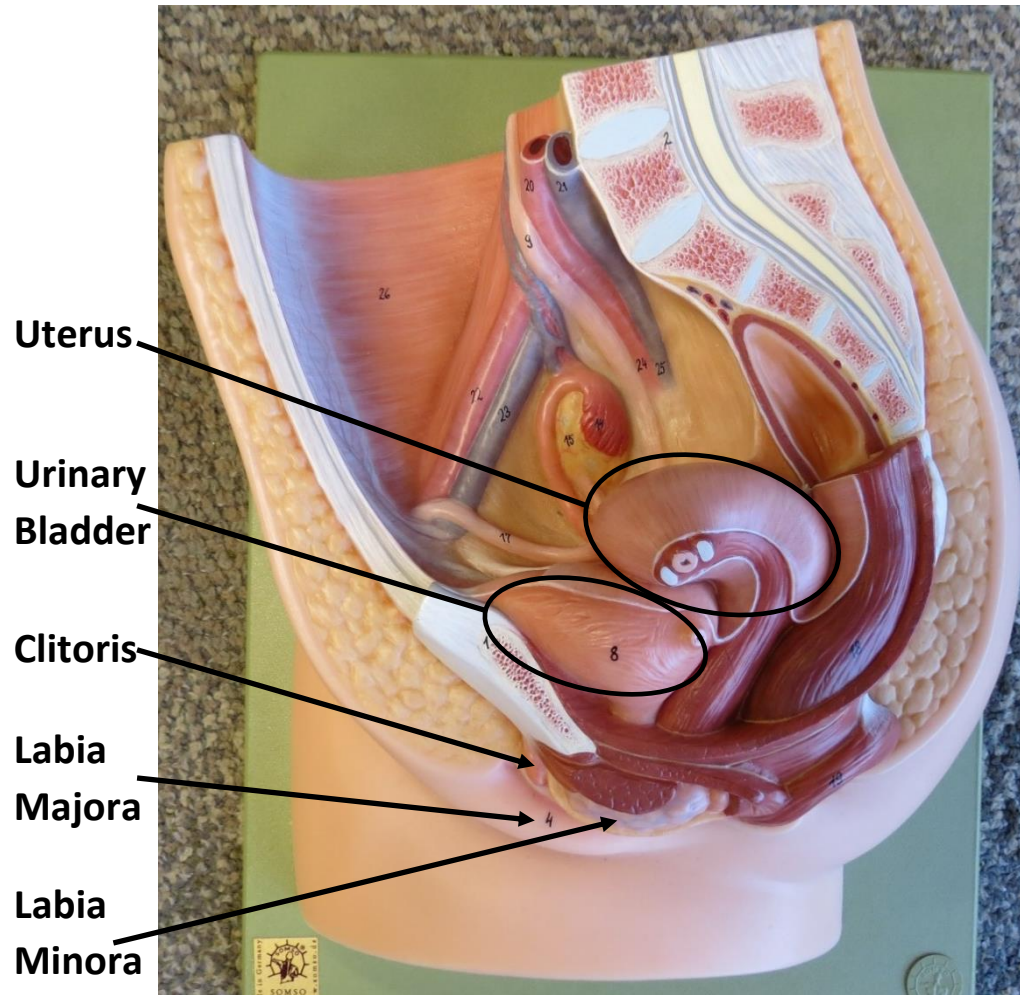
OVARY MODEL



OVARY MODEL



FEMALE REPRODUCTIVE MODELS



FEMALE REPRODUCTIVE MODELS

Perimetrium

Myometrium

Endo-
metrium

Ovary

Fallopian
Tube

Round
Ligament

Urinary
Bladder

Cervix

Vagina

Clitoris

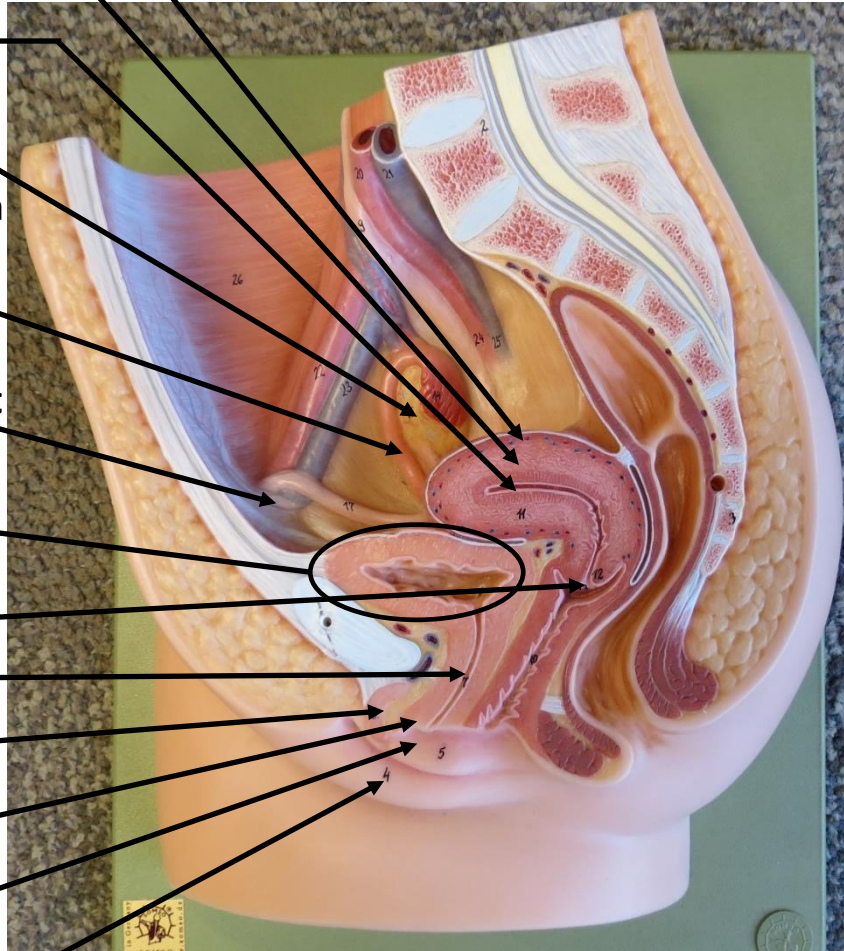
Urethra

Labia

Minora

Labia

Majora



Perimetrium

Myometrium

Endo-
metrium

Cervix

Urinary
Bladder

Vagina

Urethra

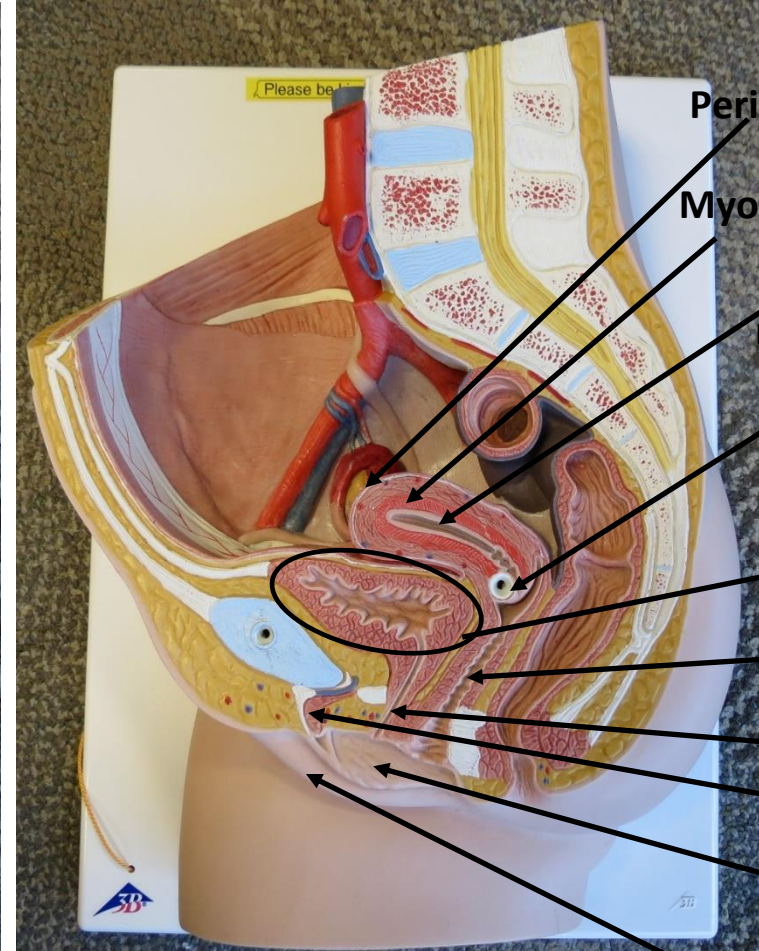
Clitoris

Labia

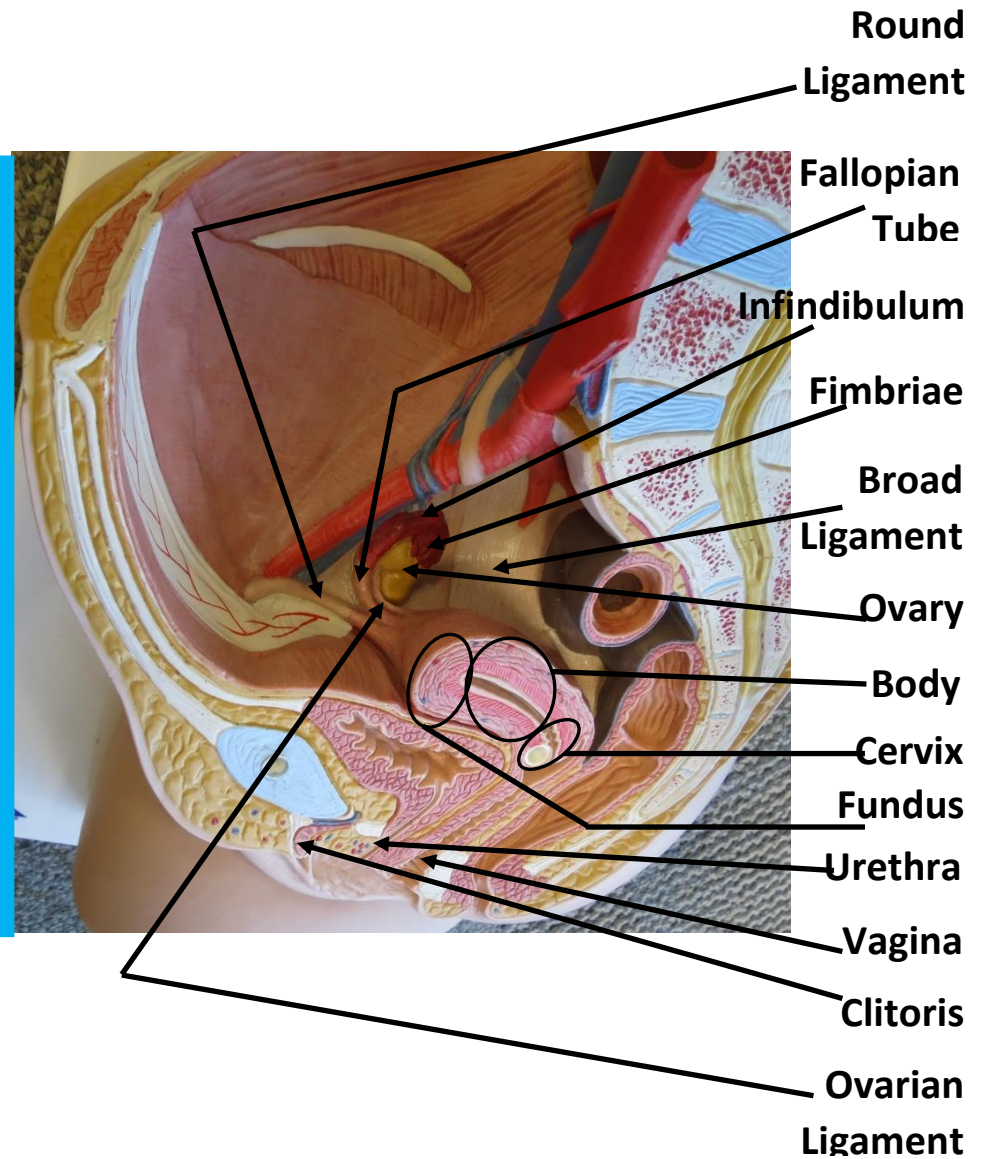
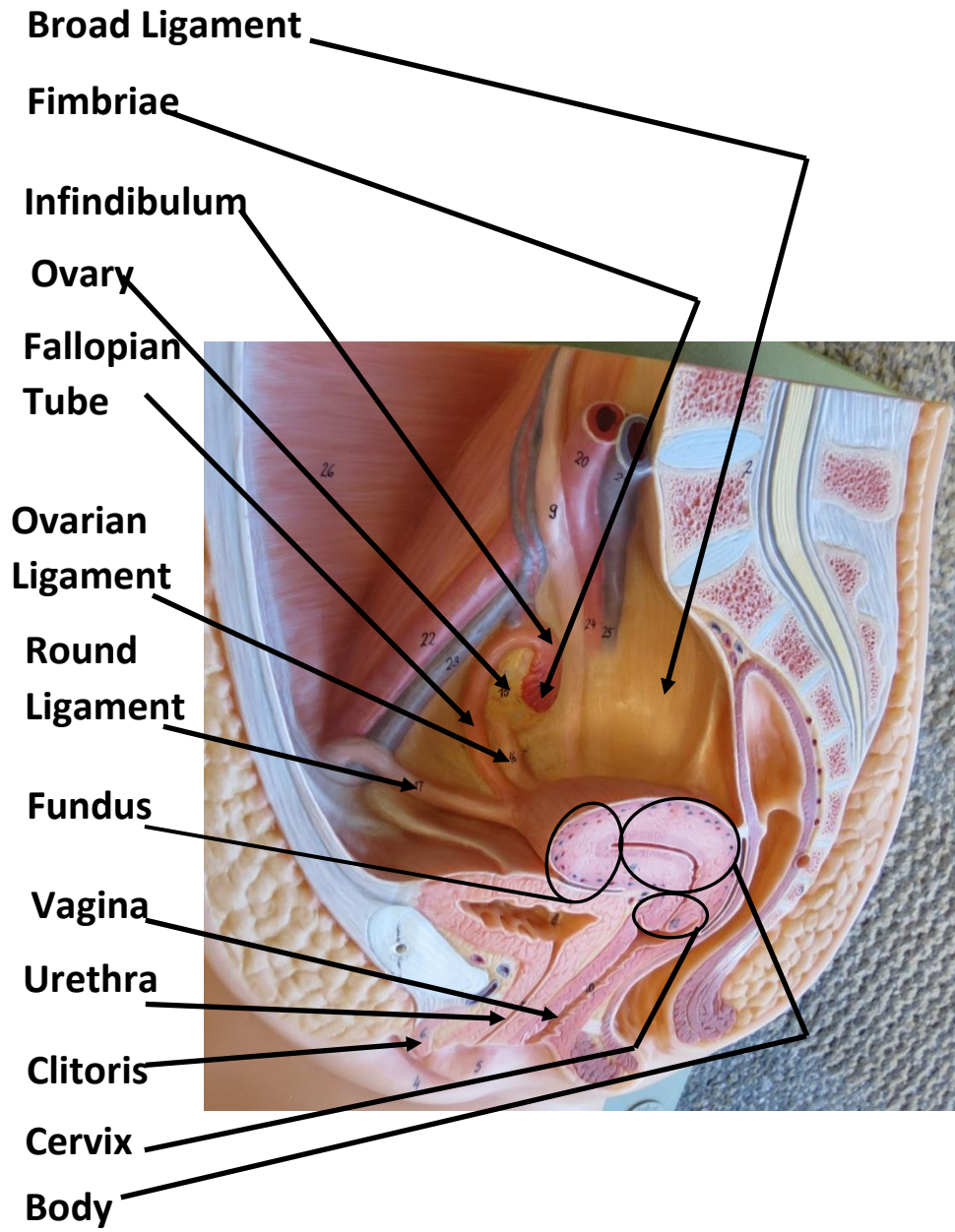
Minora

Labia

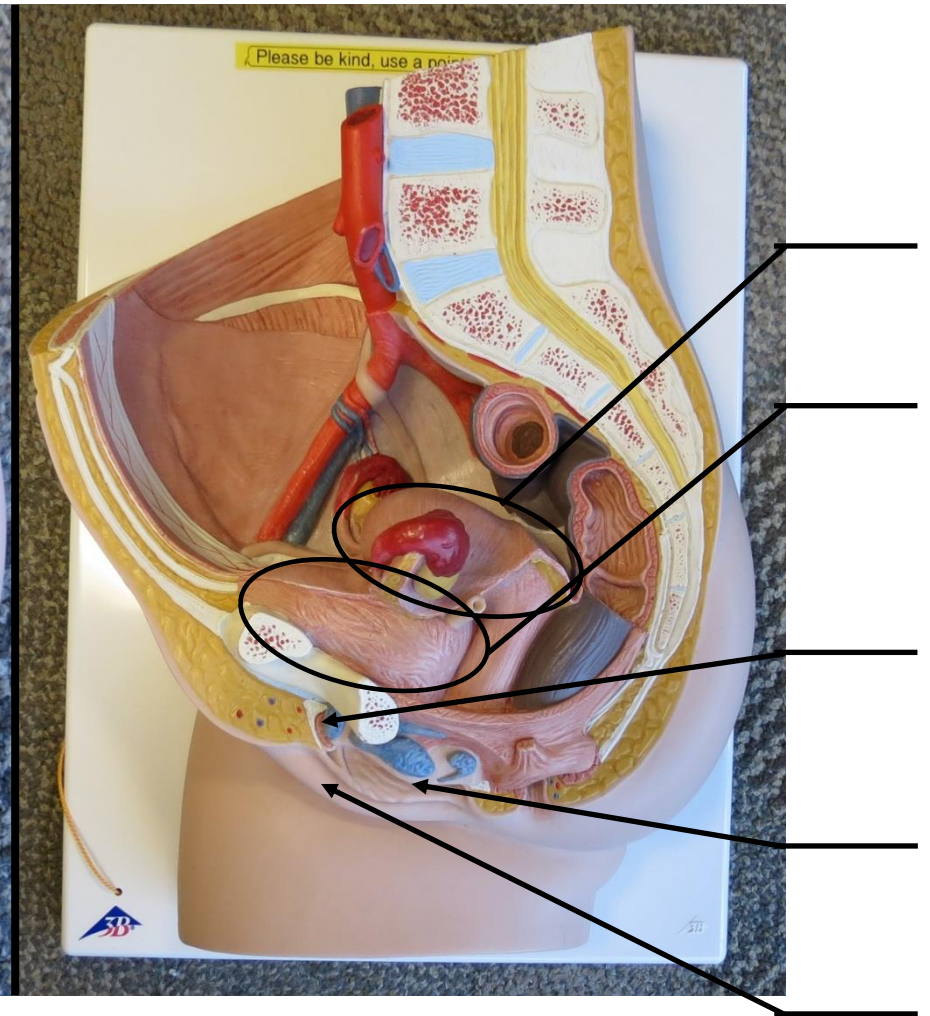
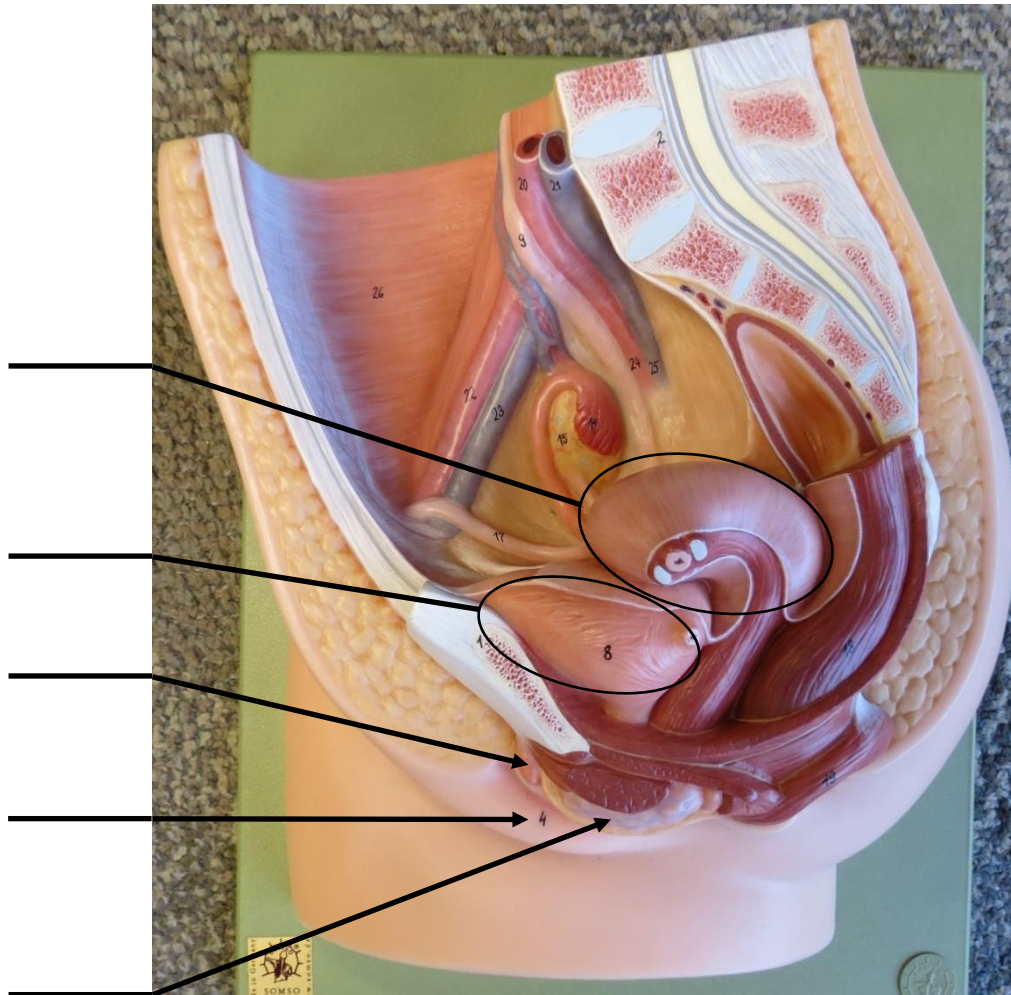
Majora



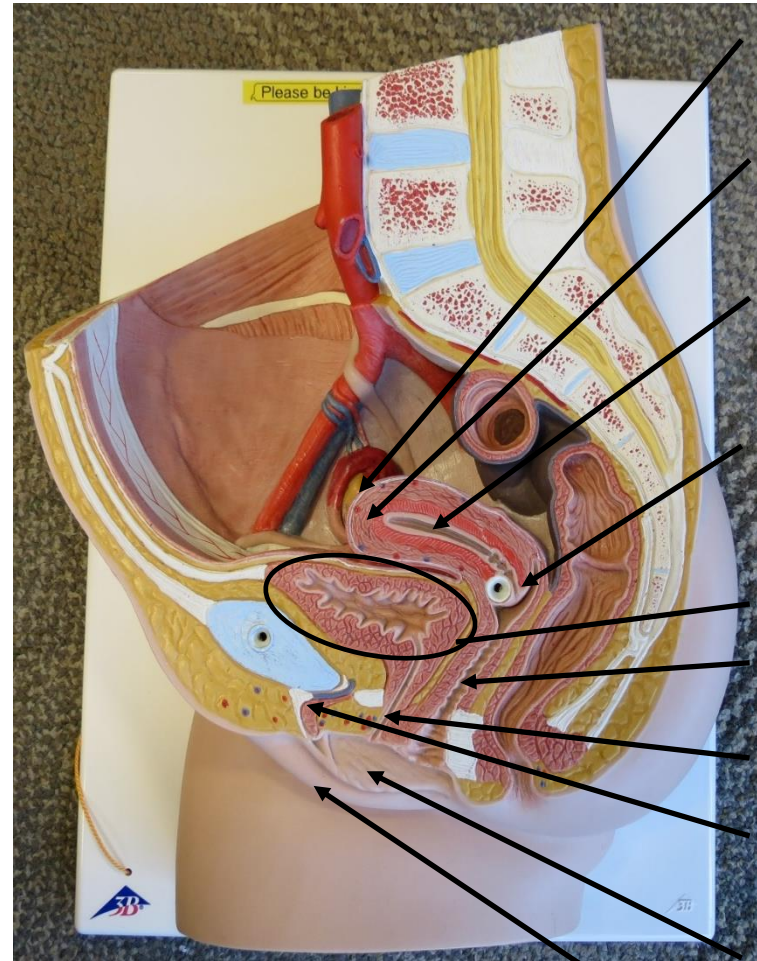
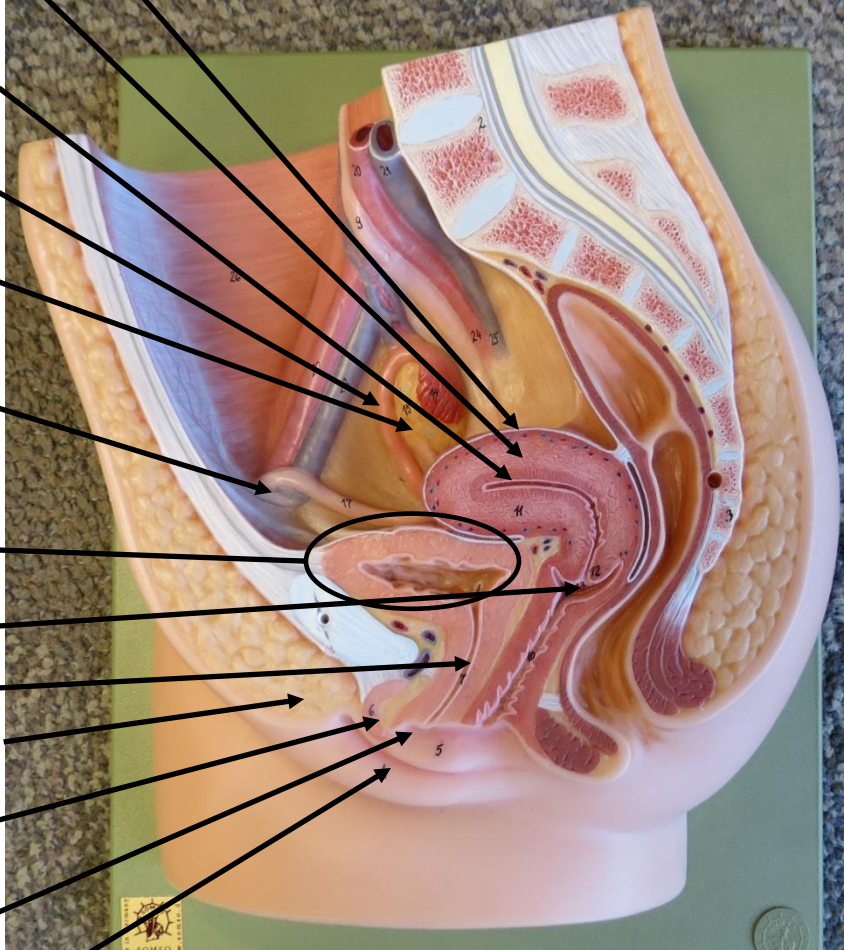
FEMALE REPRODUCTIVE MODELS



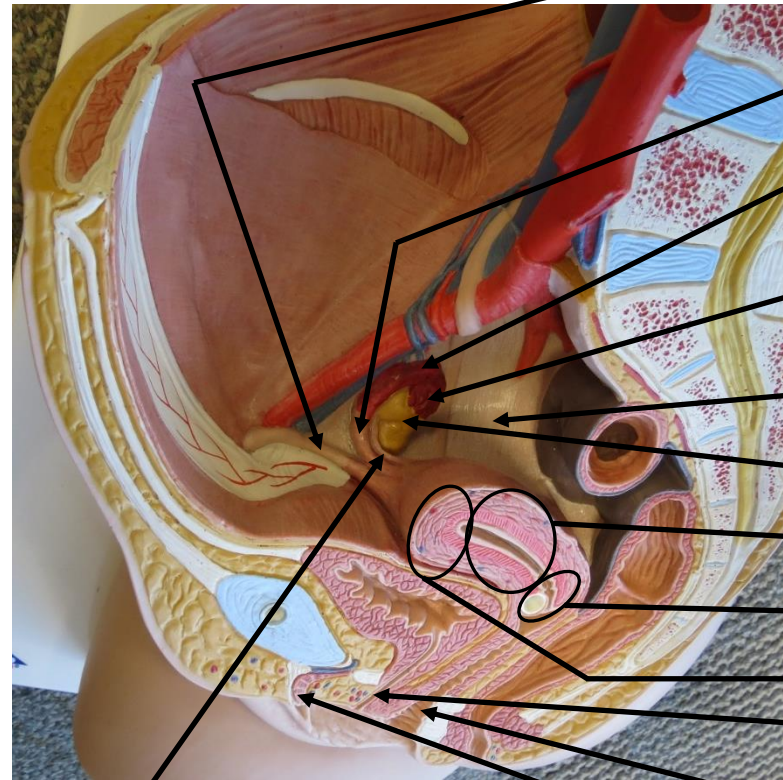
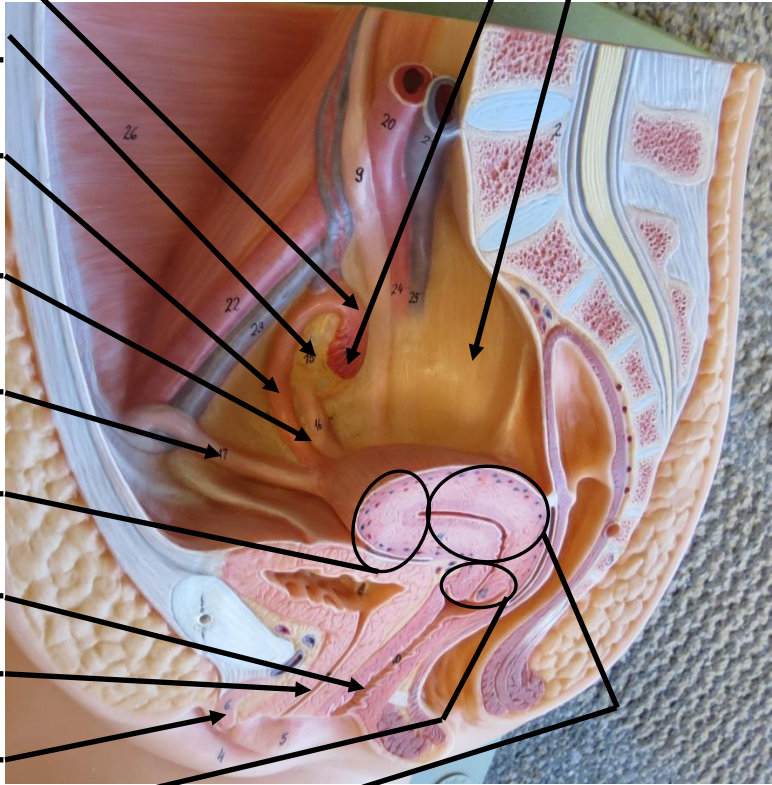
FEMALE REPRODUCTIVE MODELS



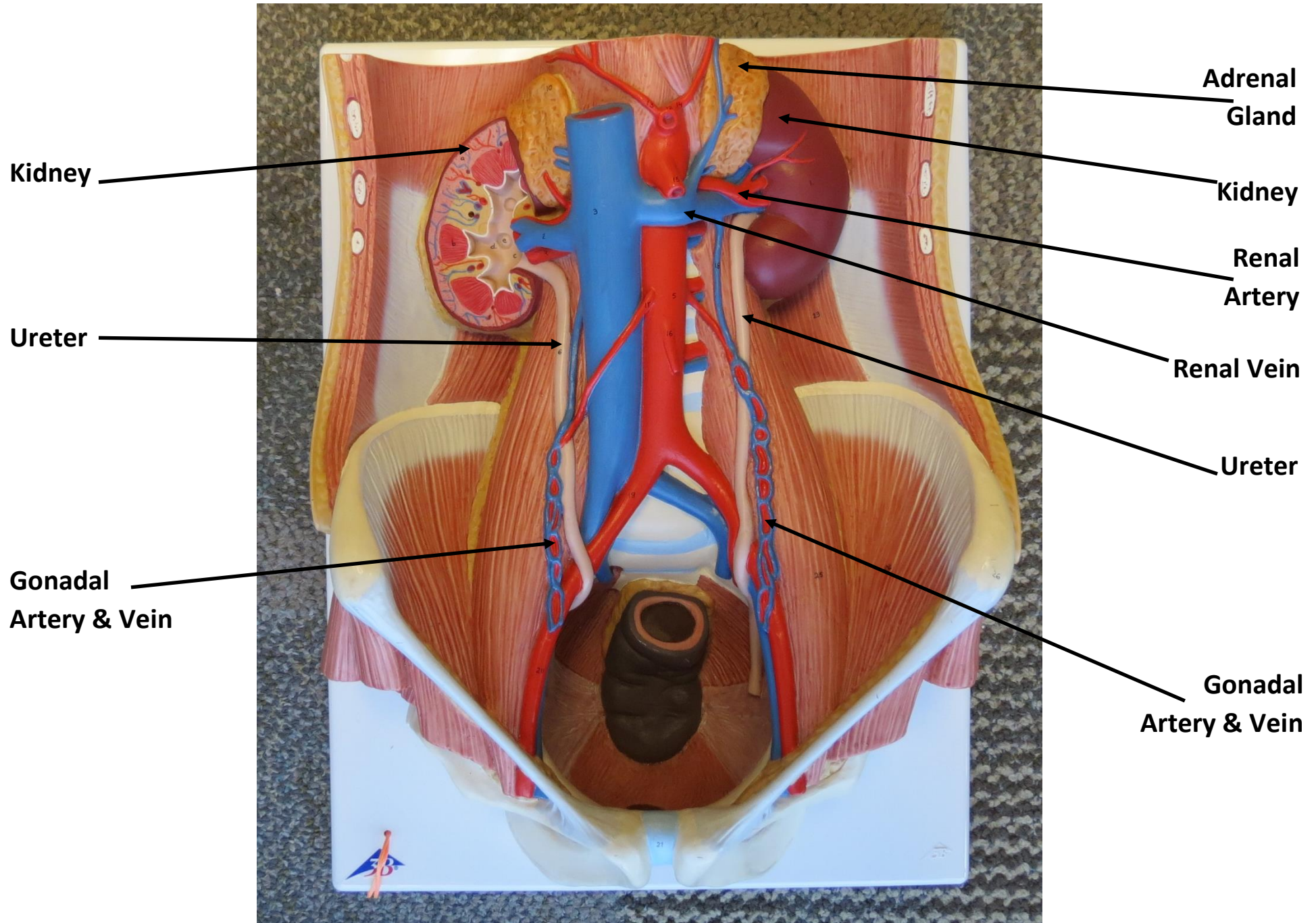
FEMALE REPRODUCTIVE MODELS



FEMALE REPRODUCTIVE MODELS

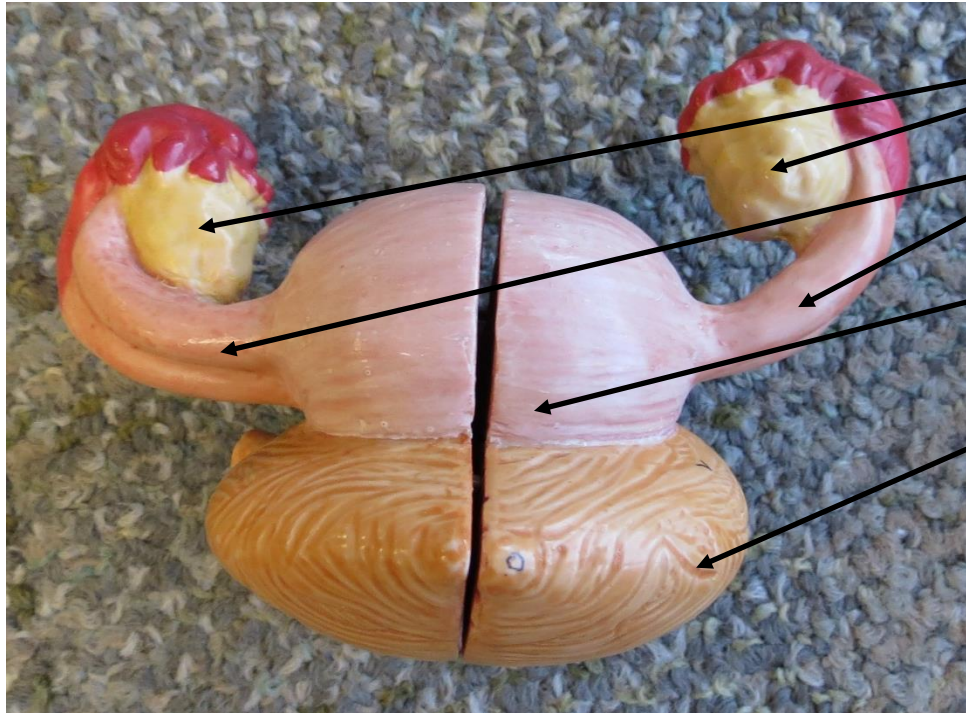


URINARY ORGANS MODEL



URINARY ORGANS MODEL

Female Organs

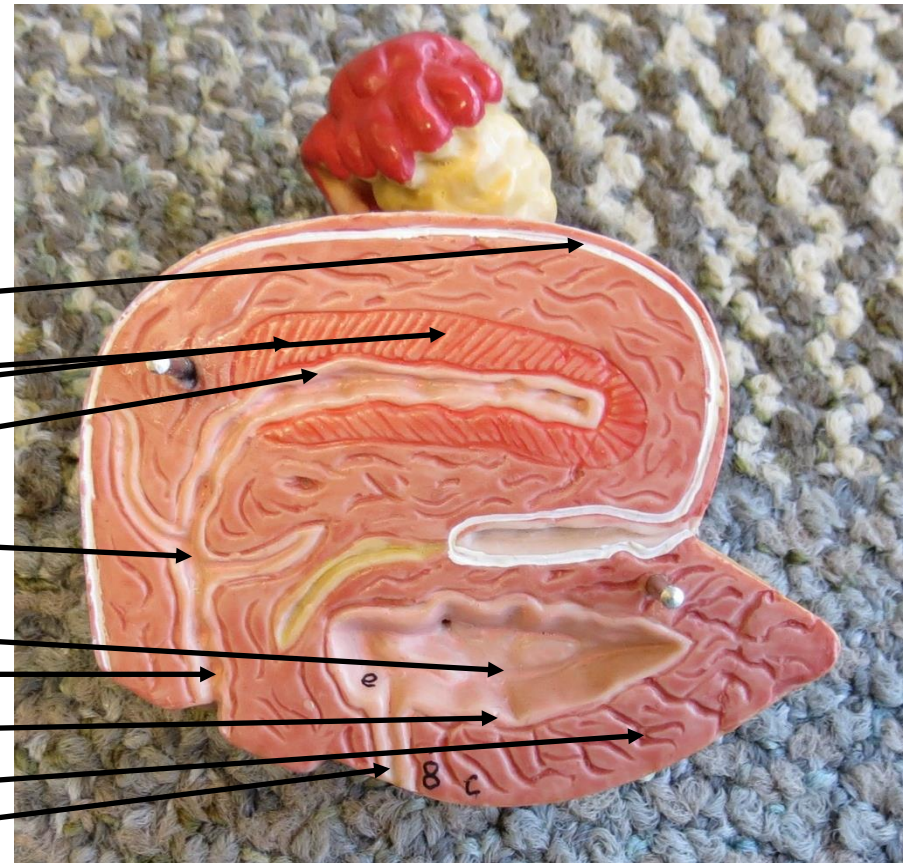


Ovaries

Fallopian Tubes

Uterus

Urinary Bladder



Perimetrium

Uterus

Myometrium

Endometrium

Cervix

Urinary Bladder

Vagina

Mucosal Lining

Muscular Wall

Urethra

Male Organs

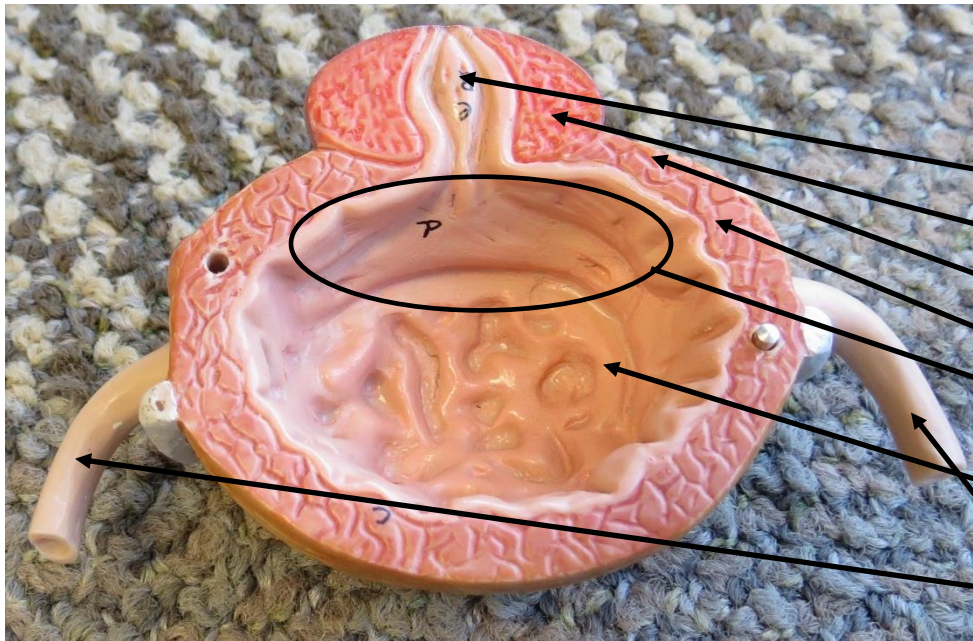
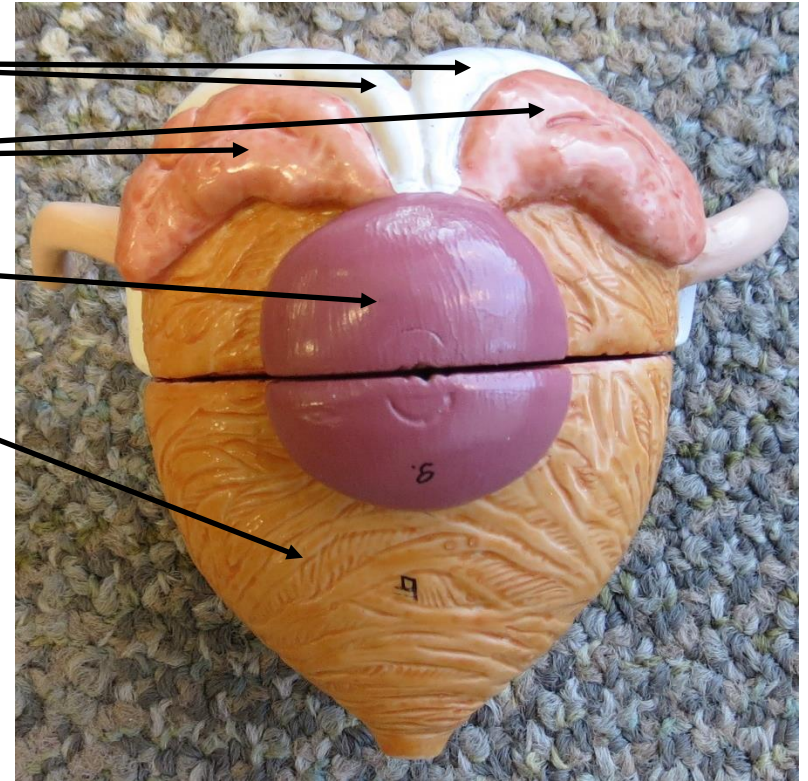
URINARY ORGANS MODEL

Ductus Deferens

Seminal Vesicle

Prostate Gland

Urinary Bladder



Prostatic Urethra

Prostate Gland

Urinary Bladder

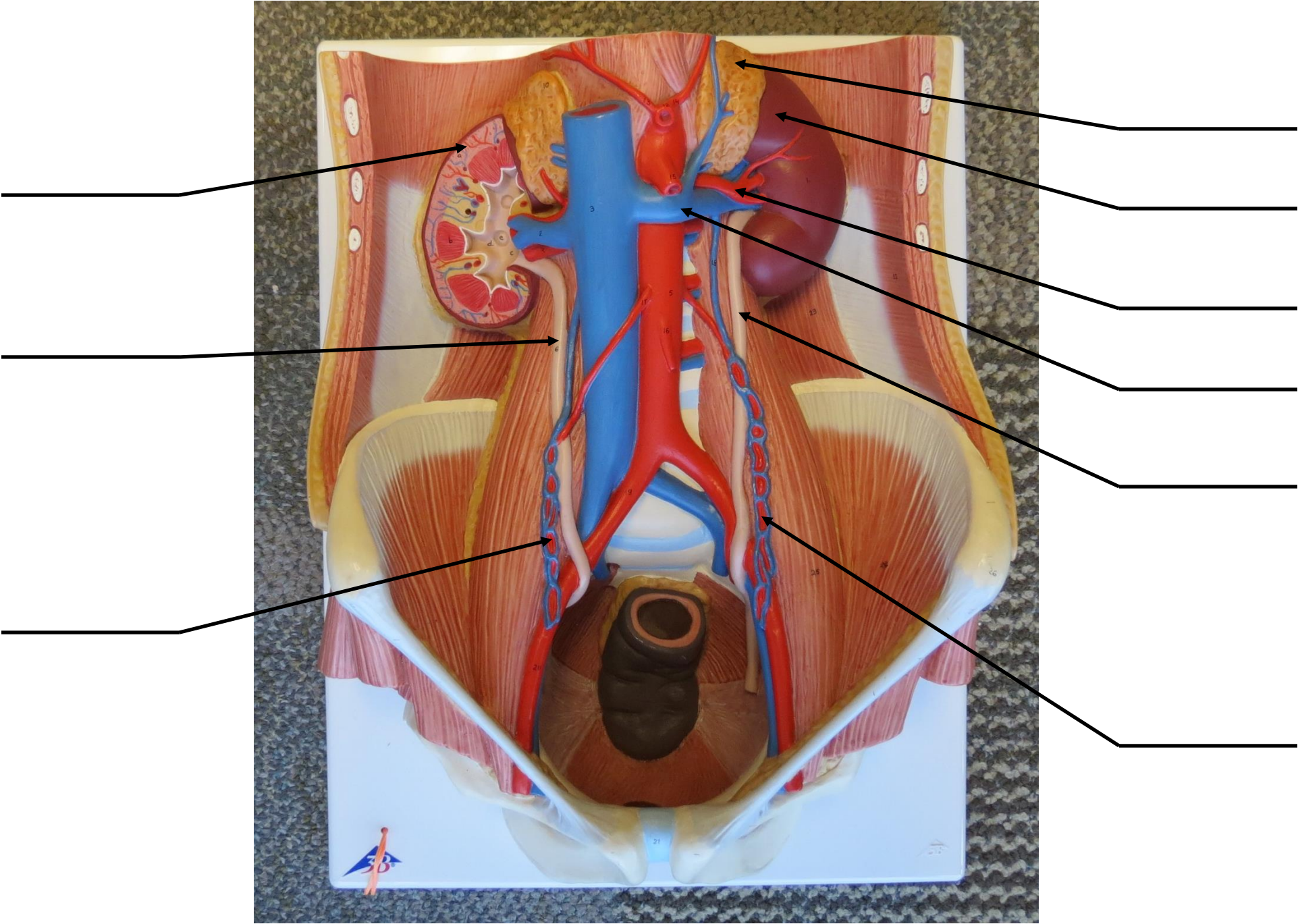
Muscular Wall

Trigone

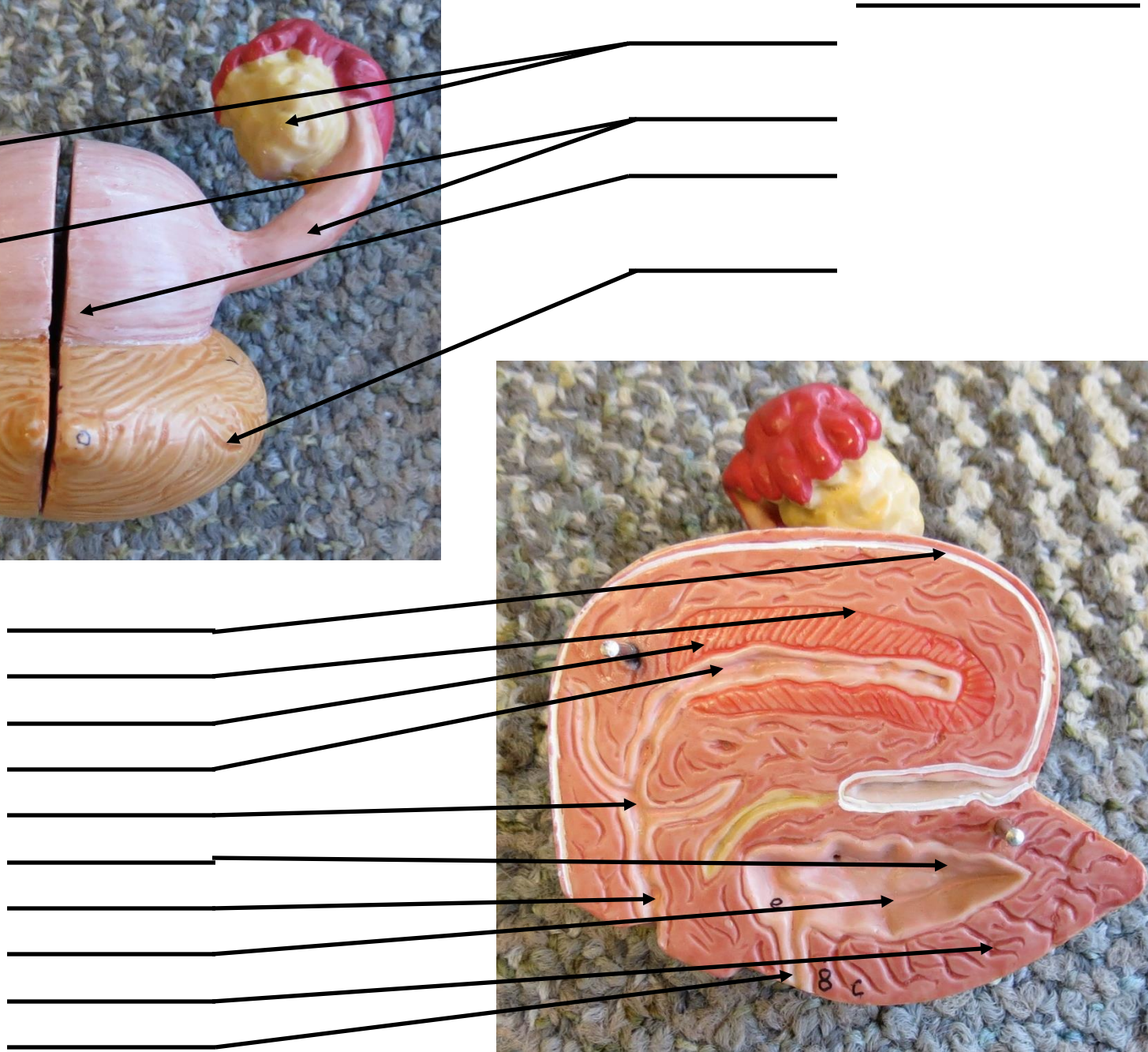
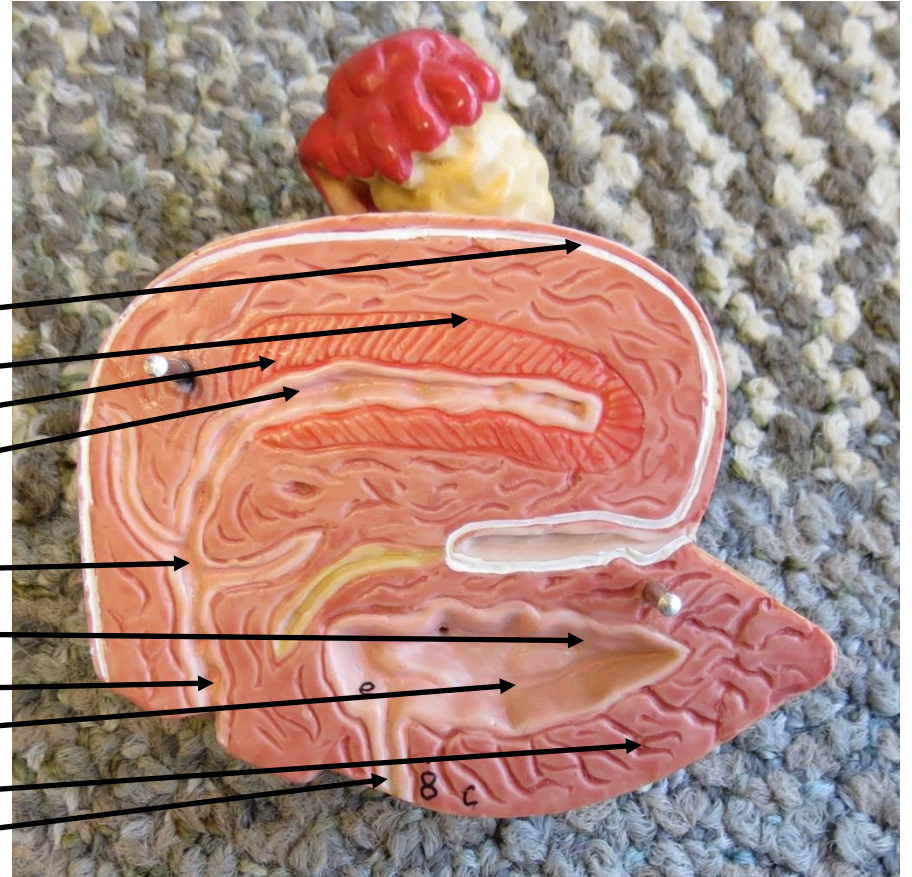
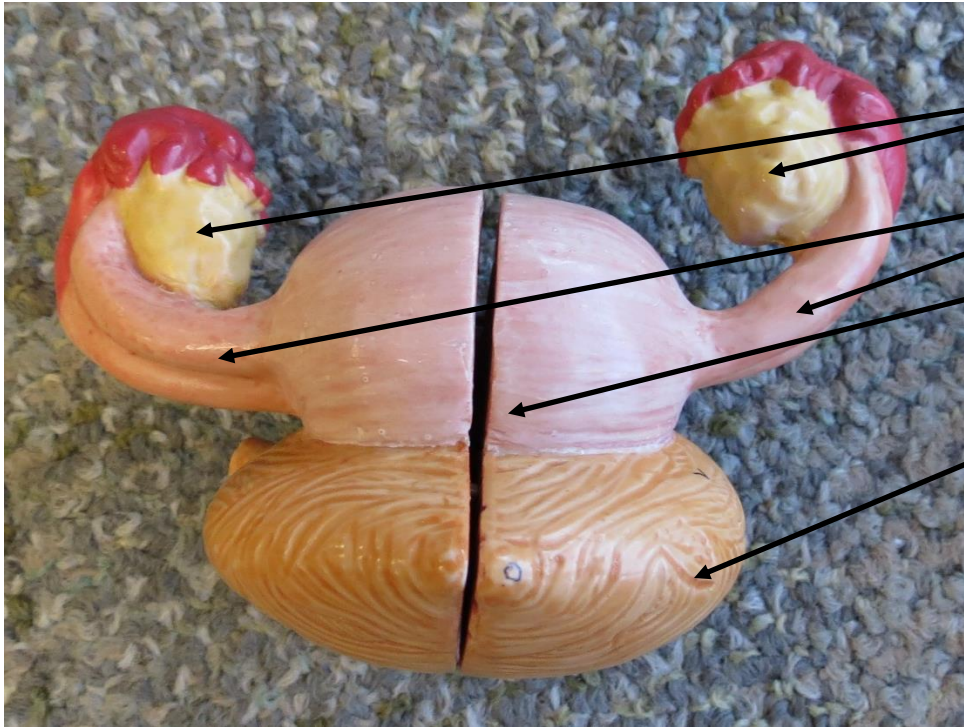
Mucosal Lining

Ureters

URINARY ORGANS MODEL



URINARY ORGANS MODEL



URINARY ORGANS MODEL

