

2019

# KIDS ON CAMPUS

**JULY 29-AUG. 2**  
**8 A.M. TO 12:30 P.M.**

K-8 summer school program developed exclusively for our area's brightest students!

**CHALLENGING OUR AREA'S BRIGHTEST LEARNERS WITH A VARIETY OF FAST-PACED, INTERACTIVE CLASSES AMONG THE STUDENT'S ACADEMIC PEERS**

Registration by teacher recommendation through teacher signature only

DESIGNED IN COOPERATION WITH:

**ABLE**

ASSOCIATION FOR BRIGHT LEARNERS EDUCATION

and area school districts

**SWIK**  
**SOUTHWESTERN™**  
**ILLINOIS COLLEGE**

SUMMER 2019

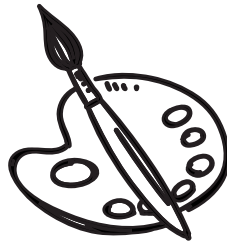
# KIDS ON CAMPUS



*Course selection is based on the grade your child was in during the 2018-19 school year.*

SOUTHWESTERN ILLINOIS COLLEGE  
Belleville Campus · 2500 Carlyle Ave.  
618-235-2700, ext. 5393

## FINE ARTS



### PAINTING THE WORLD

Young artists – get ready to roll up your sleeves, put on those paint smocks and wash out your brushes! We will virtually travel to countries around the world and learn about famous artists, various painting techniques and well-known creations. Join us and add a little “color” to your life!

**Grades K-2    Lab fee: \$5**

### THEATER CAMP

All the World's a Stage and at this camp YOU get to be the star! Join us as we explore improvisation, acting, stage movement and playwriting. Each day students will rotate through a variety of different acting exercises and activities that they will use to create their very own showcase to perform at the end of the camp. Step out of the shadows and into the spotlight with this showstopper of a camp.

**Grades 3-6    Lab fee: \$5**

### CRAFTY-A-MANIA

Do you want to get crafty? It's time to get creative! Come explore a variety of crafts using various tools and try out new techniques. You will create your own treasures and gifts in paper crafting, decoupage, fleece fun and much, much more. Photos from home will be needed.

**Grades 4-8**

**Lab fee: \$12**

## FOREIGN LANGUAGE



### HOLA

Learn the basic vocabulary and expressions through singing, storytelling, arts, and crafts of the Hispanic World. Also, present a show for parents and family at the end of the class.

**Grades 1-3**

**Lab fee: \$5**

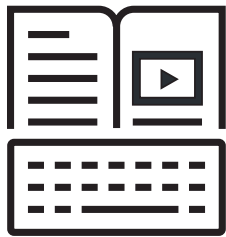
# LANGUAGE ARTS

## PICK A BOOK, NOW LET'S COOK

In this course you will get to experience the world of children's literature and become a chef! All while practicing your math, reading and writing skills. Each day you will read a different children's book and learn how to cook a recipe that goes along with the story you read. As you cook you will make a recipe book to take home with you and try delicious foods that you can make for your friends and family! For food allergy concerns or related questions call 618-235-2700, ext. 5393.

**Grades K-1**

**Lab fee: \$5**



## MEDIA/ TECHNOLOGY

## REACH FOR THE SKY: THEME PARK DESIGN COMPANY

Using the internet, Microsoft Word, YouTube, and Microsoft PowerPoint, students will research famous amusement parks, determine which features make them successful, design and create a virtual model of their own amusement park, and sell the design to their classmates. Bring your creativity and persuasive skills!

**Grades 2-4**

## READY FOR BUSINESS?

We will work on computers designing, planning and creating a business. Kids will plan their business and design a logo. They will create advertisements including a commercial, plus talk about expenses and profits. They will present their product and have a celebration on the last day. Kids will learn to use WORD, Excel, Access, Movie Maker and PowerPoint and have fun!

**Grades 4-6**

## MADE FROM SCRATCH

Think you can design the next Flappy Bird? Don't spend too much time scratching your brain to figure it out. Instead, see what you can do with Scratch! Using Scratch, you will be able to program interactive stories, games and animations – and share your creations with others online. Visit [scratch.mit.edu](http://scratch.mit.edu) for more details.

**Grades 5-8**



# SCIENCE

## THE INCREDIBLE EDIBLE GARDEN

This class encourages children to explore the fascinating garden of edible plants. Children will have the opportunity to create their own edible "garden in a bucket," learn how to care for a garden, learn the parts of plants, make nutritional recipes using plant stamping and much, much more. Dig in and give it a "Grow"!

**Grades K-1 Lab fee: \$10**

## LET'S GO BUGGY

Enjoy an exciting exploration in the world of bugs. Through wonderful books, projects and nature walks, investigate different types of bugs. Bug Math will also be a fun way to sharpen and practice your "math" skills. By the end of your exploration, you will have your own bug book full of buggy information. Which bug will be your favorite?

**Grades K-1**

## EVERYONE'S A SCIENTIST

Why don't spiders stick to their webs? Whose boat will hold the most pennies? Do coconuts sink or float? These are just some of the questions you can answer during the investigation into what scientists do. Learn the steps to scientific method, how to make observations, and the different categories of science. Keep track of your investigations in your science journal that will be brought home at the end of the week.

**Grades 2-3**

**Lab fee: \$5**

## SILLY SCIENCE

Silly Science is a fun class for children who enjoy doing science experiments and getting a little dirty. While having fun doing our silly experiments, we will learn the scientific method and science terms. Science experiments will vary from silly slime to making our own dinosaur fossils.

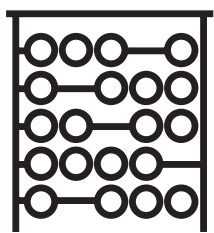
**Grades 2-4**

**Lab fee: \$10**

## FUN WITH PHYSICS

In this class, explore how physics explains how the world around us moves. Do hands-on activities to demonstrate some properties of physics and Newton's Laws of Motion. Build and fire catapults, race cars down tracks while trying to make them quicker and slower as they go. We will even attempt the old pulling the tablecloth off the table trick, plus many other hands-on activities. Students will get to take home a few of the models they create.

**Grades 4-6**



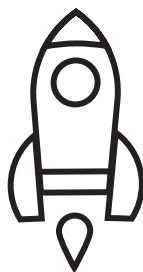
## ECONOMICS

### **MONEY, MONEY, MONEY**

Ever want to own your own business? What are you waiting for? This summer is your chance to strike it rich! From a simple lemonade stand to a million-dollar company, the rules of business always remain the same and the opportunities to make money are endless. In this class, you will create and build your own "invention," develop a company name, create clever commercials and advertisements, "sell" your product in the real world and much more. In doing so, you will learn about markets, economics, money management (accounting/finance), marketing and other college-level business skills through fun, engaging activities.

**Grades: 5-8**

**Lab fee: \$5 (to be collected the first day of class.)**



## ADVENTURES IN ROBOTICS

### **ROBOTICS I**

Students will learn soldering procedures, wiring and basic electronics through the development of their own sound-operated robot. Don't miss out, join the fun! Regular attendance is needed to finish this fun and exciting project.

**Grades 5-8**

**Lab fee: \$30**

### **ADVANCED ROBOTICS**

For those who like a challenge, go beyond the basics to work together and explore the principles of engineering a robot. Learn to problem solve by utilizing Lego Mindstorms to design and build a robot to complete a challenge. Have fun while learning about engineering and building your design skills! Regular attendance is needed to finish this fun and exciting project as part of an engineering team. Robotics I or proof of robotics team experience is a prerequisite to this class.

**Grades 6-8**

**Lab fee: \$30**

### **FUTURE ROBOTICISTS, INC.**

If you got hooked on robots with Robotics I and Advanced Robotics, this is the next step for the serious roboticist. You will use the Engineering Design Method to create a robot using a more advanced building system. The robot will be designed to solve a challenge while you will learn about various types of actuators, sensors and programming techniques. Regular attendance is required to finish the challenge. Robotics I and Advanced Robotics are prerequisites to this class.

**Grades 7-8**

**Lab fee: \$30**

**SWIC.EDU**



# ABLE

ASSOCIATION FOR BRIGHT  
LEARNERS EDUCATION

*proudly presents*



# PARENT WORKSHOP

**“How to Provide Positive  
Feedback to a Child When Their  
Behavior Is Less than Positive”**

**Monday, July 29**  
**9 a.m. to noon**

**Presenter: Dr. Agnes Meyo**

*Clinical psychologist with a counseling practice  
for gifted children in St. Louis*

**Southwestern Illinois College • Belleville Campus**  
**Main Complex Room 1220**

**ABLE members no charge. \$3 for all others on the day of the workshop.**

# HOW TO SIGN UP FOR CLASSES

## GENERAL INFORMATION

Kids on Campus enrichment classes are sponsored by Southwestern Illinois College and the Association for Bright Learners Education. Class instructors are certified teachers or experts in their field, but are not special education certified.

## CLASS DATES

Monday, July 29 through Friday, Aug. 2 • 8 a.m. to 12:30 p.m.

## ELIGIBILITY

K-8 students who are at the 90th percentile or above on a national achievement test OR are a year and a half above grade level in the CURRENT school year are eligible. Homeschoolers MUST bring a copy of a national achievement test (IOWA, SRA, etc.) to registration. Students will not be allowed to register without the signature of a school official.

## STUDENT CONDUCT

Behavior problems cannot be tolerated. Should they result in dismissal from the program, refunds will not be issued.

## CLASS CONFIRMATION/CANCELLATION POLICY

Confirmation/cancellation letters will be sent two weeks before the beginning of classes. Please call the office at 618-235-2700, ext. 5393, if you do not receive your letter. No refunds will be given after June 1!

## GENERAL REGISTRATION, FEES & PAYMENTS

Dates: **Tuesday, May 7 • 4:30-6 p.m.**  
**Thursday, May 9 • 5-6 p.m.**

Fee: **\$100 for ABLE members & full-time SWIC employees, plus lab fees**  
**\$110 for all others, plus lab fees**

**NEW Location: SWIC Belleville Campus**  
**Information Sciences Bldg.**  
**First Floor - outside of the library**

For more information, call SWIC at 618-235-2700, ext. 5393.

Due to the increasing number of students with food allergies,  
**a snack WILL NOT be provided.**

However, each child is encouraged to bring a snack daily.

## ABLE PRIORITY REGISTRATION AND FEES\*

Date: **Monday, May 6 • 4:30-6 p.m.** Fee: **\$100**  
Location: **Whiteside Middle School Library**

*Association for Bright Learners Education (ABLE) is a regional parent organization that sponsors Kids on Campus, January Action Labs and parent workshops.*

**\*You must be an ABLE member by May 1 to get priority registration. To join ABLE, return the membership form at the bottom of this form. Members can renew their membership at registration.**

## MAIL-IN REGISTRATION:

Send registration form with check payable to SWIC to: **SWIC, Community Education, 2500 Carlyle Ave., Belleville, IL 62221.**

**Mail-in registration will be accepted starting Friday, May 10, according to availability.**

## Registration and Eligibility Certification Form

☐ ABLE member ☐ Non-member  
(PHOTOCOPIES OF REGISTRATION FORM ARE ACCEPTED)

### (PLEASE PRINT)

Student's Last Name \_\_\_\_\_ First \_\_\_\_\_ School Attended \_\_\_\_\_

Street \_\_\_\_\_ City \_\_\_\_\_ State \_\_\_\_\_ ZIP \_\_\_\_\_

Age \_\_\_\_\_ Grade (just completed) \_\_\_\_\_ Parent/Guardian \_\_\_\_\_

Home Phone \_\_\_\_\_ Work Phone \_\_\_\_\_ Cell Phone \_\_\_\_\_ Email \_\_\_\_\_

**Disability Policy:** SWIC will consider all requests for reasonable accommodations based upon disability, including requests to assist children with disabilities and to administer medication, on a case-by-case basis in accordance with the Americans With Disabilities Act.

### VERIFICATION OF ELIGIBILITY:

I certify that the above named student is at, or above, the 90th percentile on either a national achievement test, or is a year and a half above grade level in current school work. **You will NOT be allowed to register without signature of a school official. Homeschoolers must bring to registration a copy of a national achievement test (SRA, Iowa).**

Signature and title of referring school official \_\_\_\_\_

List the course your child wishes to take, as well as a second and third choice, if you will accept a substitute due to over-enrollment or cancellation.

1) \_\_\_\_\_

2) \_\_\_\_\_

3) \_\_\_\_\_

T-shirts can **ONLY** be purchased at on-site registrations 5/6, 5/7 & 5/9. We will accept cash or a **SEPARATE CHECK**. We cannot accept payment for the T-shirt and class on the same check.

### ABLE MEMBERSHIP FORM - DUES \$16 PER YEAR

You must be a member by May 1 to come to priority registration. Send a \$16 check payable to ABLE to: ABLE, P.O. Box 821, Columbia, IL 62236 or call 618-531-0005.

Parent Name \_\_\_\_\_

Street \_\_\_\_\_

City \_\_\_\_\_ State \_\_\_\_\_ ZIP \_\_\_\_\_

Phone \_\_\_\_\_ School \_\_\_\_\_

Registration Fee	\$ _____
Lab Fee	\$ _____
TOTAL	\$ _____
Check #	_____