



**Belleville Campus Guide
Information Sciences Building**

About Us

SWIC Campuses

- **Belleville**
- Sam Wolf Granite City
- Red Bud
- Clay Baitman Fire Science Training Center
- Scott Air Force Base
- Southwestern Illinois Justice and Workforce Development Center
- Wyvetter H, Younge Higher Education Center-East St. Louis



Belleville Campus

5 Buildings

- Main Complex Building
- **Information Sciences Building**
- Liberal Arts Building
- Schmidt Art Center
- Advanced Manufacturing Academy



Information Sciences Building

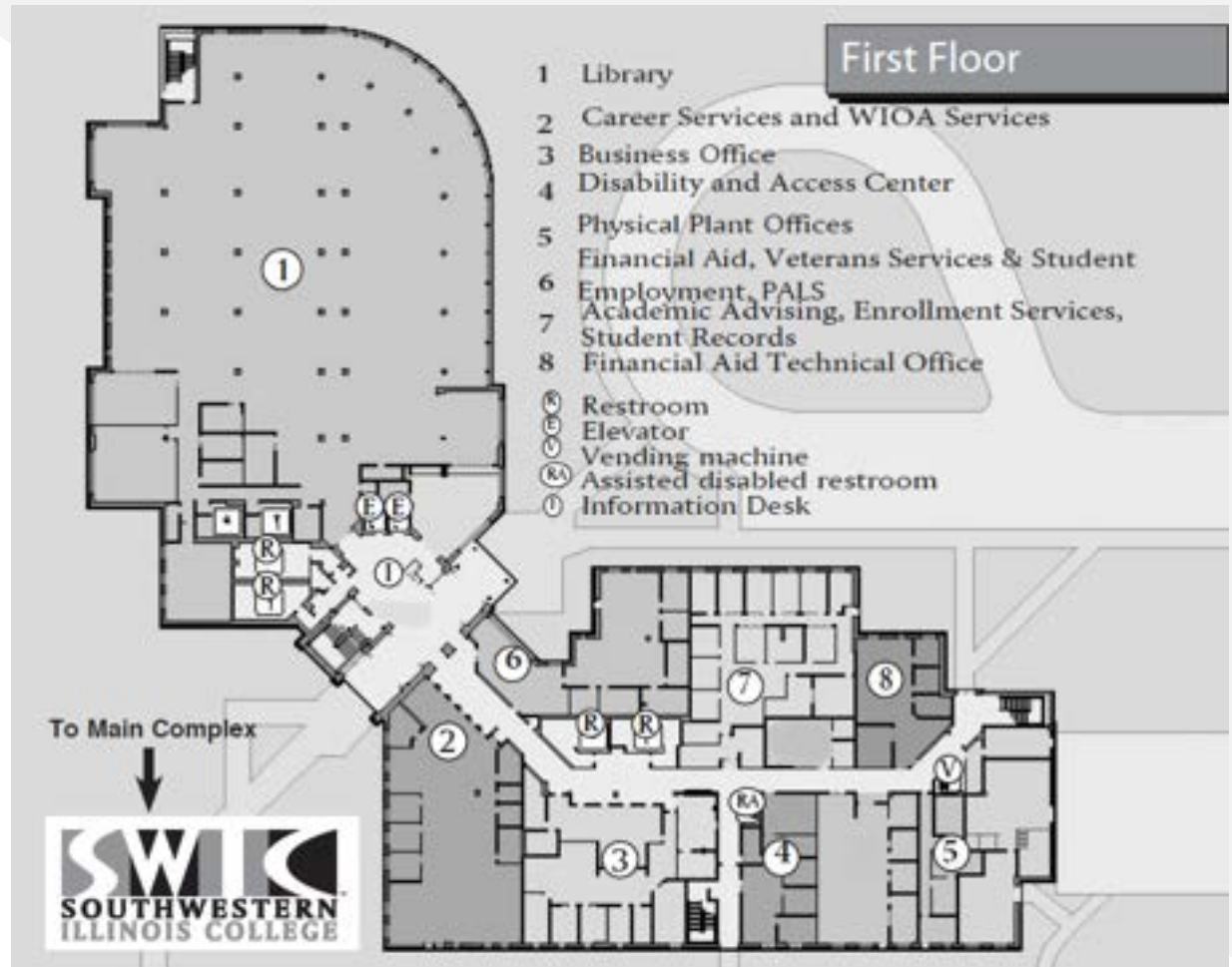
Facilities Overview

- Academic Advising
- Academic Departments: Business, Computer Information Systems and Networking
- Business Office/Student Accounts
- Career Services
- Disability and Access Center
- Enrollment Services
- Financial Aid
- Library
- Student Employment
- Student Records
- Veterans Services
- WIOA
- 6 General Use Classrooms
- 10 Computer Classrooms
- 2 Program-Specific Classroom and Labs
- [Index of Facilities](#)



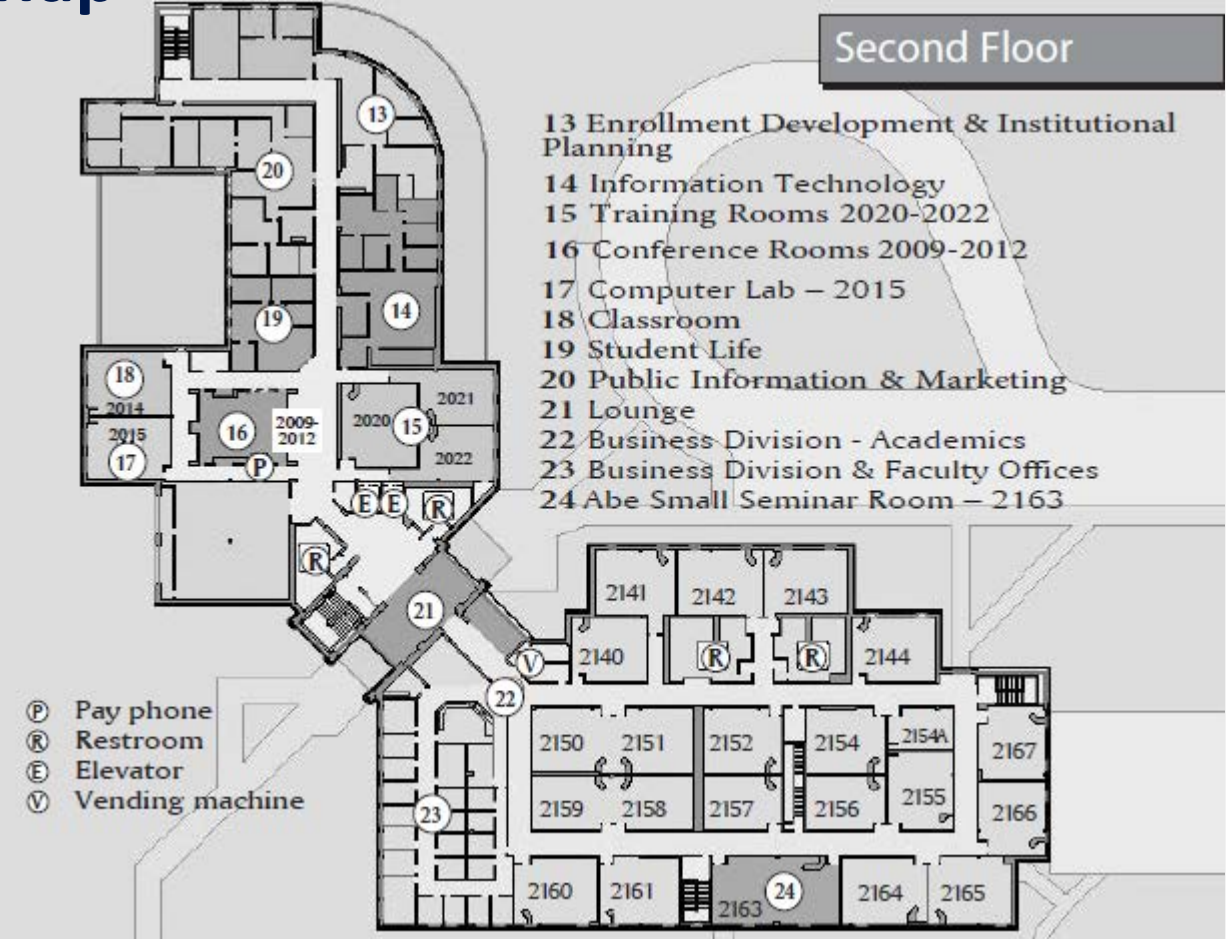
Information Sciences First Floor Campus Map

- 1005 Restroom
- 1006 Restroom
- 1008 [Student Lounge Area](#)
- 1012 Restroom Women's
- 1013 Circulation Desk
- 1014 Library Staff Office
- 1015, 1016 Conference/Study Room
- 1019 Restroom Men's
- 1021 Restroom Unisex
- 1022 Library Instruction Room
- 1023 Silent Study Lounge
- 1025 [Library](#)
- 1030 Research Assistance Center
- 1035 [Financial Aid, Veteran Services, and Student Employment \(1035-1043\)](#)
- 1050 [Career Services and WIOA Services \(1050-1059\)](#)
- 1052 Veterans Success Counselor
- 1071 [Business Office](#)
- 1115 [Advising, Enrollment Services, Student Records \(1115-1142\)](#)
- 1145 [Disability and Access Center \(1145-1149\)](#)
- 1155 Financial Aid Technical Offices (1155, 1160-1164)
- 1156 Vet Success Counselor
- 1170 Physical Plant Offices (1170-1177)
- 1198 Restroom Assisted Disabled



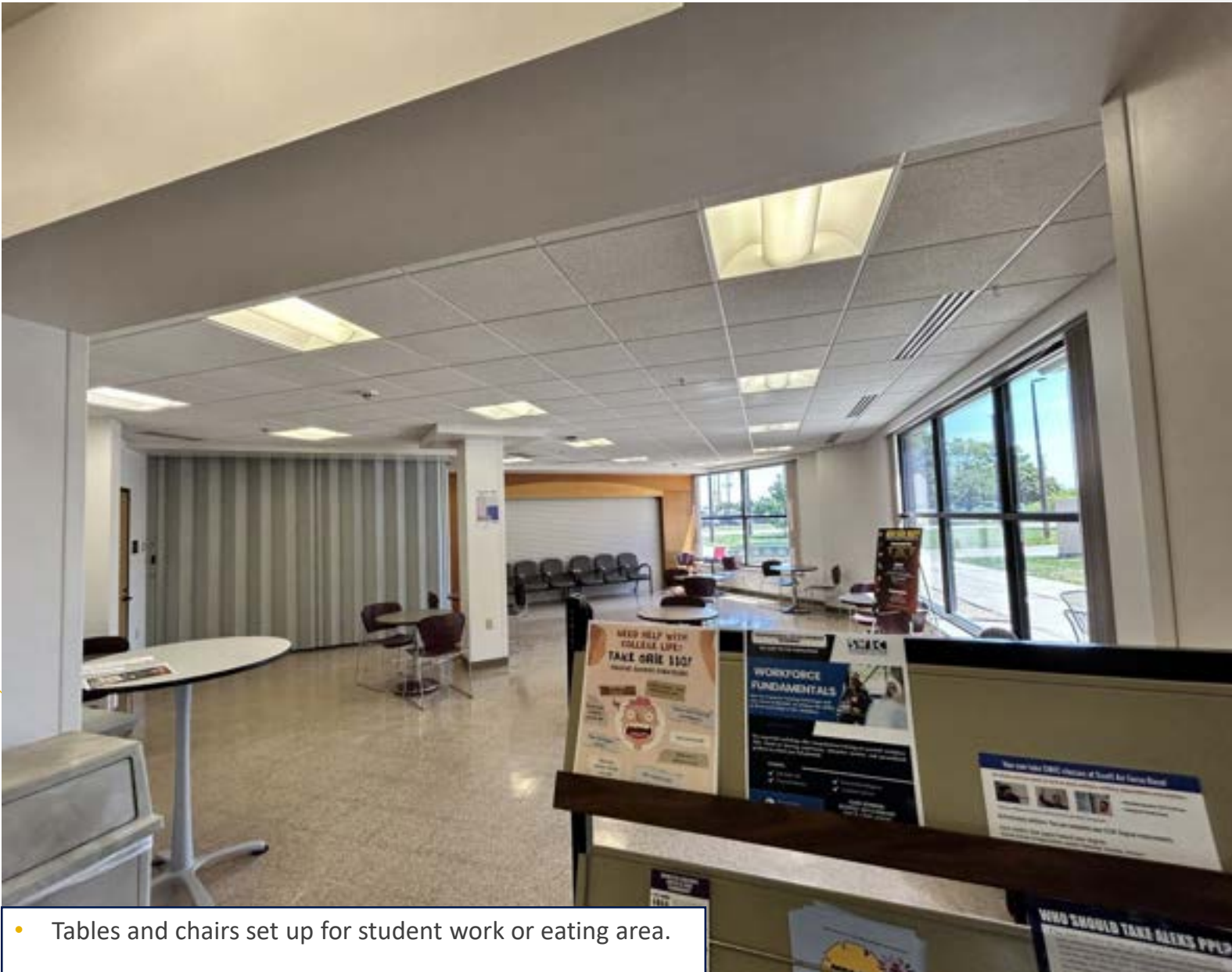
Information Sciences Second Floor Campus Map

- 2100 Business Division-Academics
- 2102-2108 Faculty Offices
- 2109 Dean's Office (vacant)
- 2110-2113 Faculty Offices
- 2116 IT Office
- 2117-2118 Faculty Office
- 2119 Business Admin. Assistant Office
- 2120-2122 Faculty Offices
- 2123 IT Office
- 2124 Adjunct Office
- 2134 Student Study Area and Seating
- 2136 Student Study Area and Seating
- 2140 Networking Computer Classroom
- 2141 Classroom
- 2142 Classroom
- 2143 Classroom
- 2144 Classroom
- 2145 Restroom Women's
- 2146 Restroom Men's
- 2150 Computer Classroom
- 2151 Computer Classroom
- 2152 Computer Classroom



- 2154 Computer Classroom
- 2155 Computer Classroom
- 2156 Computer Classroom
- 2157 Computer Classroom
- 2158 Computer Classroom
- 2159 Computer Classroom
- 2160 Classroom
- 2161 Video Conferencing/ Lecture Room
- 2163 Abe Small Seminar Room
- 2164 Diagnostic Sonography Classroom and Lab
- 2165 Classroom
- 2166 Pharmacy Technician Classroom and Lab
- 2167 Computer Lab

BCIS 1008: Student Lounge



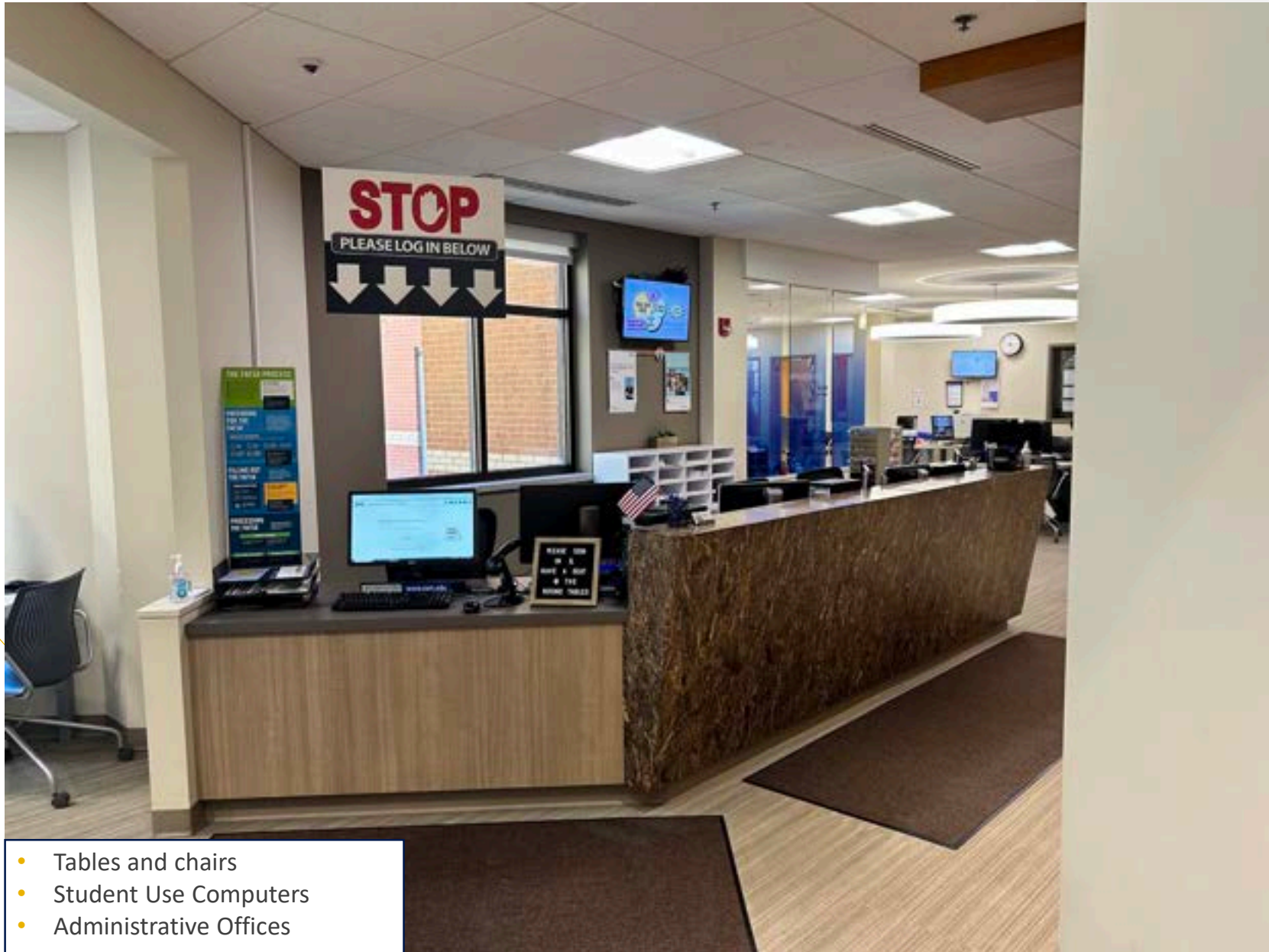
- Tables and chairs set up for student work or eating area.

BCIS 1025: Library



- Large study tables spaced throughout the library.
- Study carrels, Comfy chairs and tables, Computer stations
- Copying/printing/scanning
- 2 conference rooms that seat up to 6 people each, outfitted with Promethean Boards and white boards
- 1 Silent study lounge – office tables/chairs for quiet individual study
- Instruction classroom - includes an instructor station and promethean board and computers stations for class
- Information resources include books, reference, articles and movies (both physical and digital)
- Equipment checkouts including – laptops, hot spots, color graphing calculators, biology models

BCIS 1035: Financial Aid, Veteran Services, Student Employment, PALS Advocates



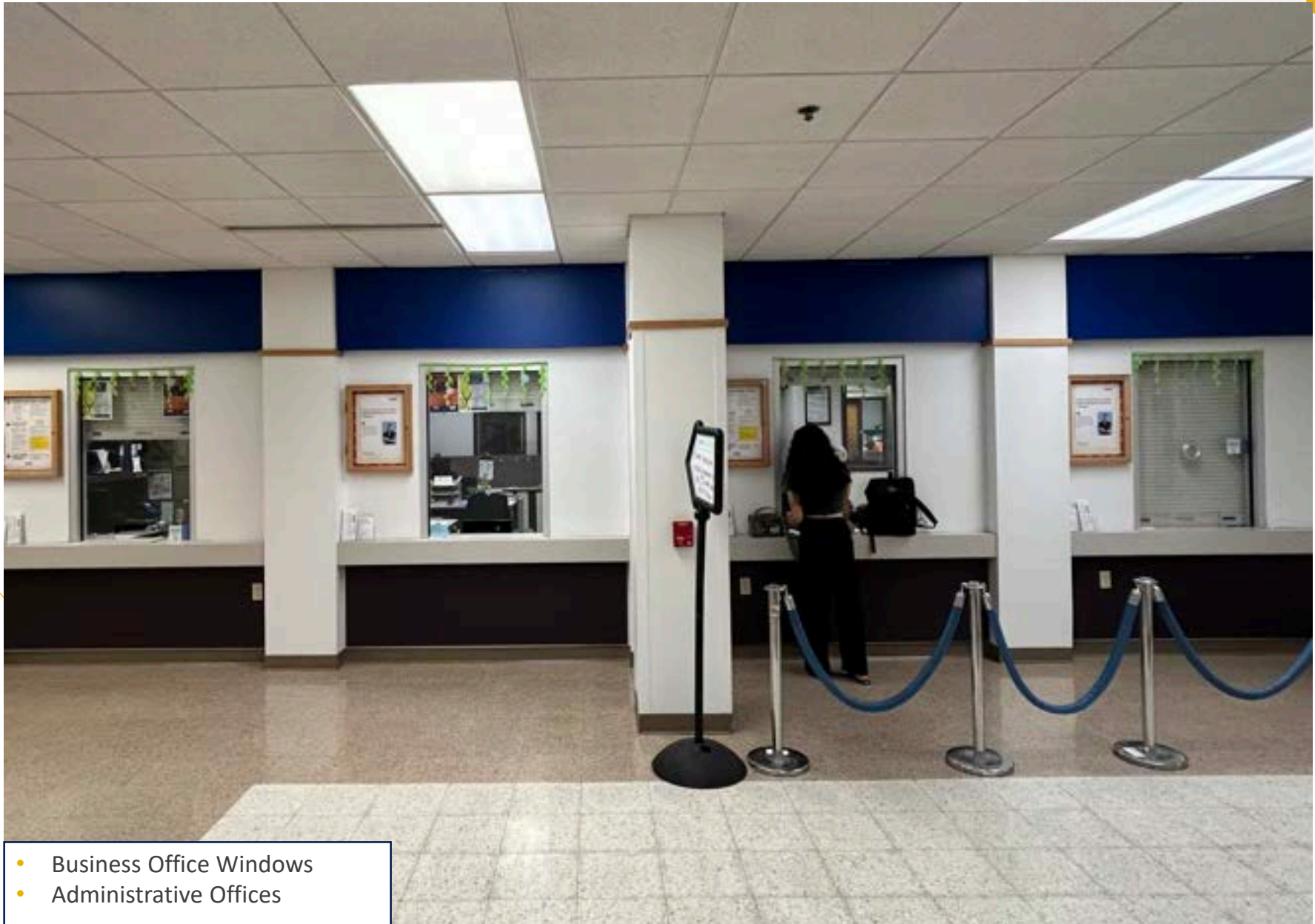
- Tables and chairs
- Student Use Computers
- Administrative Offices

BCIS 1050: Career Services and WIOA Offices



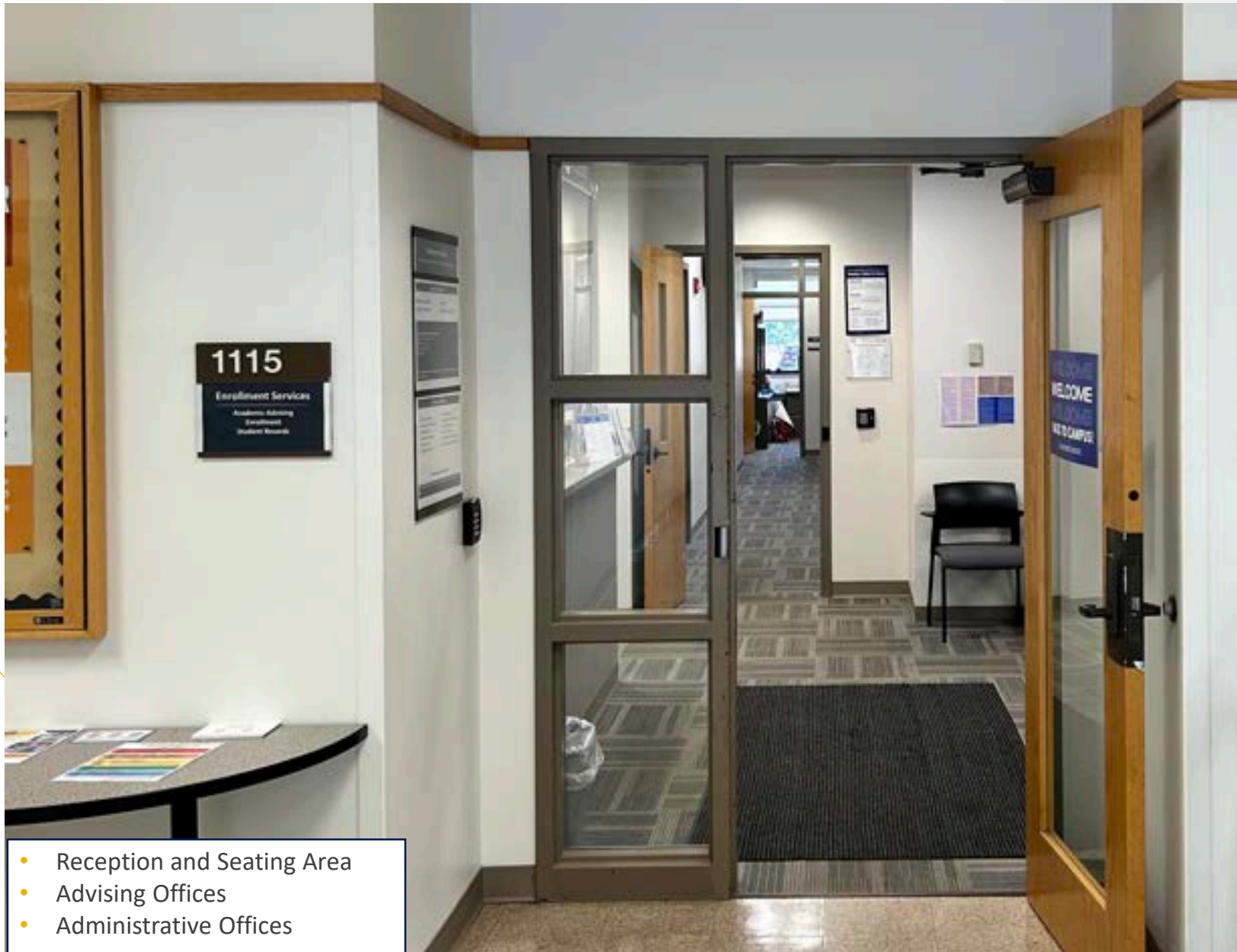
- Reception and Seating Area
- Administrative Offices

BCIS 1071: Business Office



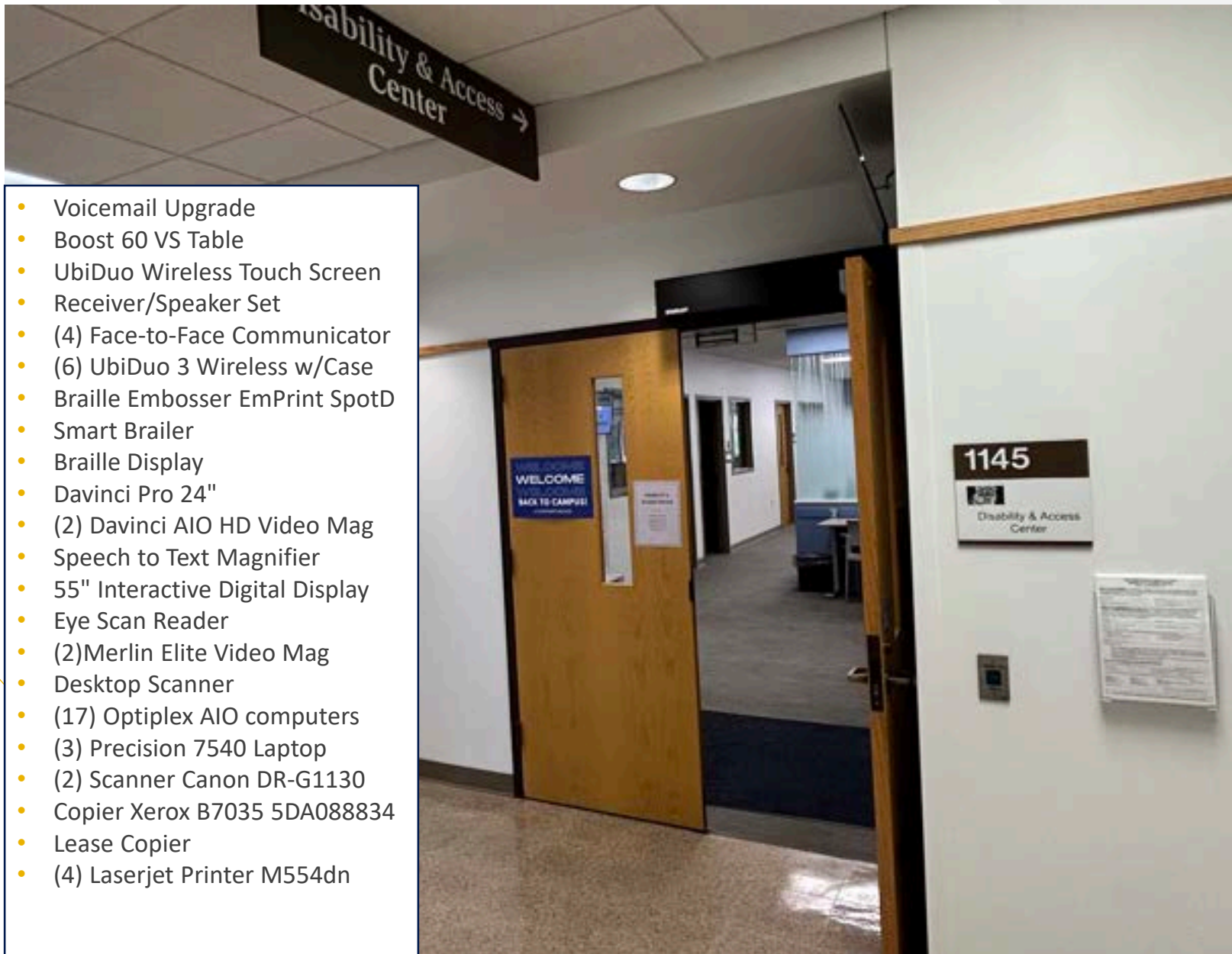
- Business Office Windows
- Administrative Offices

BCIS 1115: Enrollment Services, Advising, Student Records

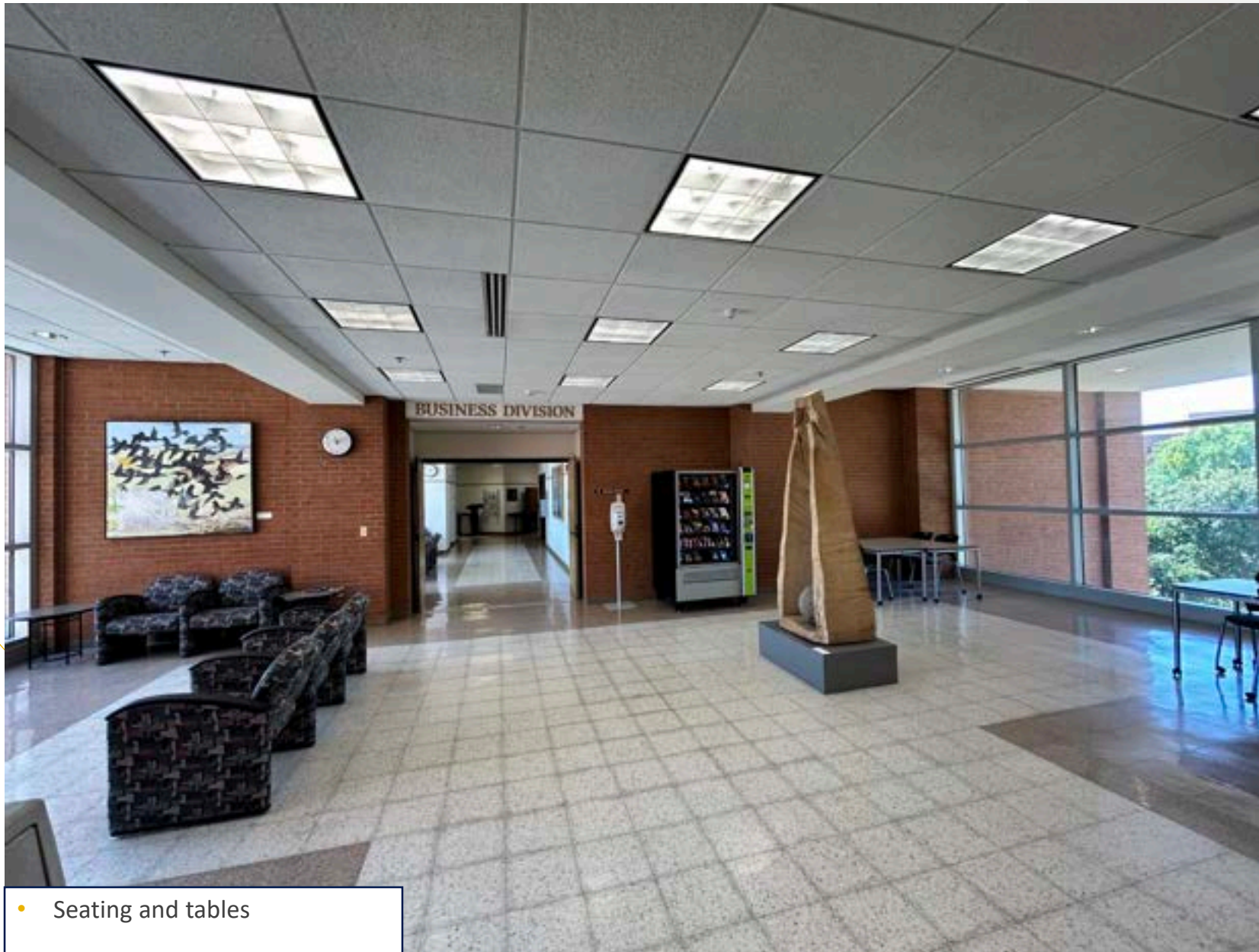


- Reception and Seating Area
- Advising Offices
- Administrative Offices

BCIS 1145: Disability and Access Center



BCIS 2134: Student Study Area and Seating



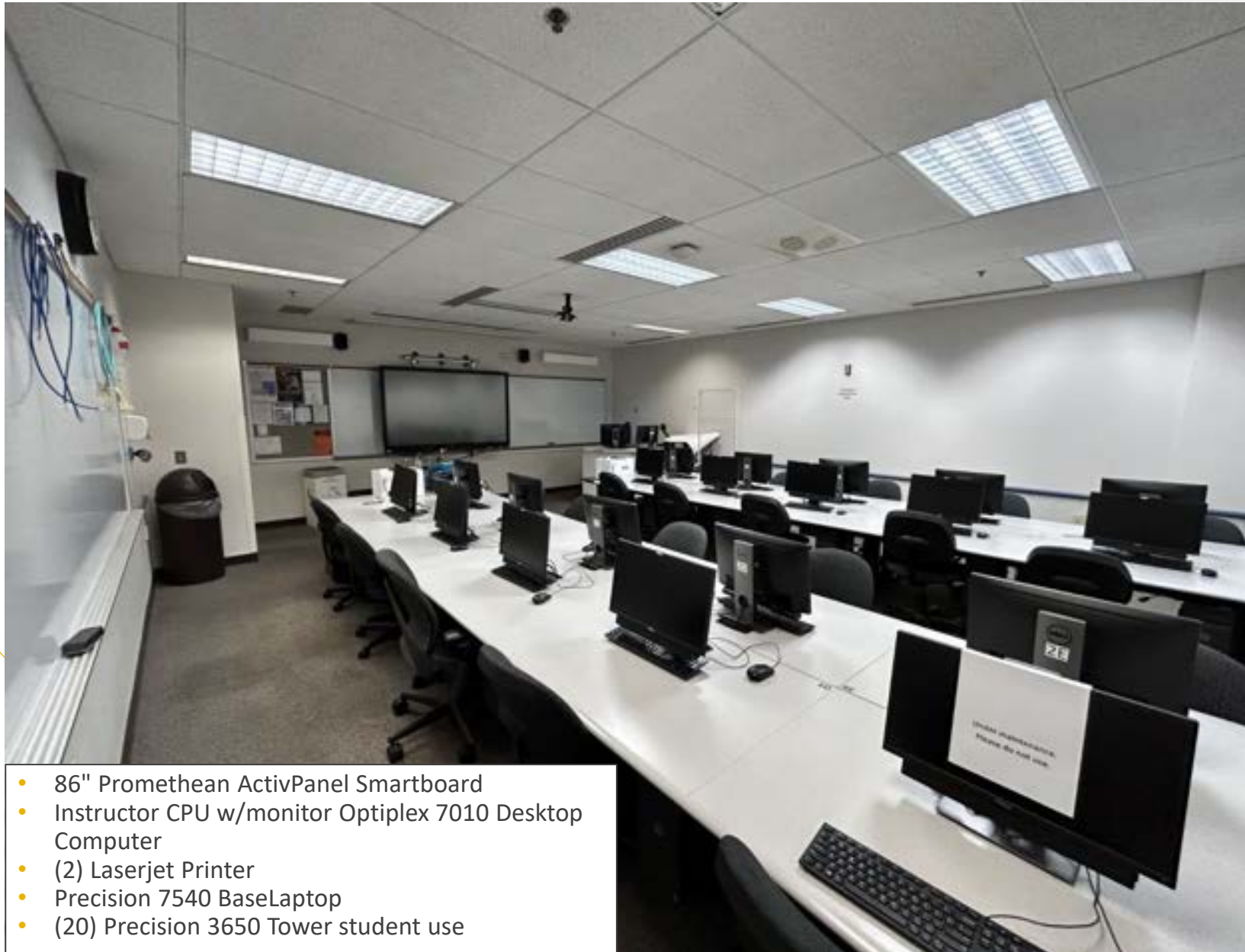
- Seating and tables

BCIS 2136: Student Study Area and Seating



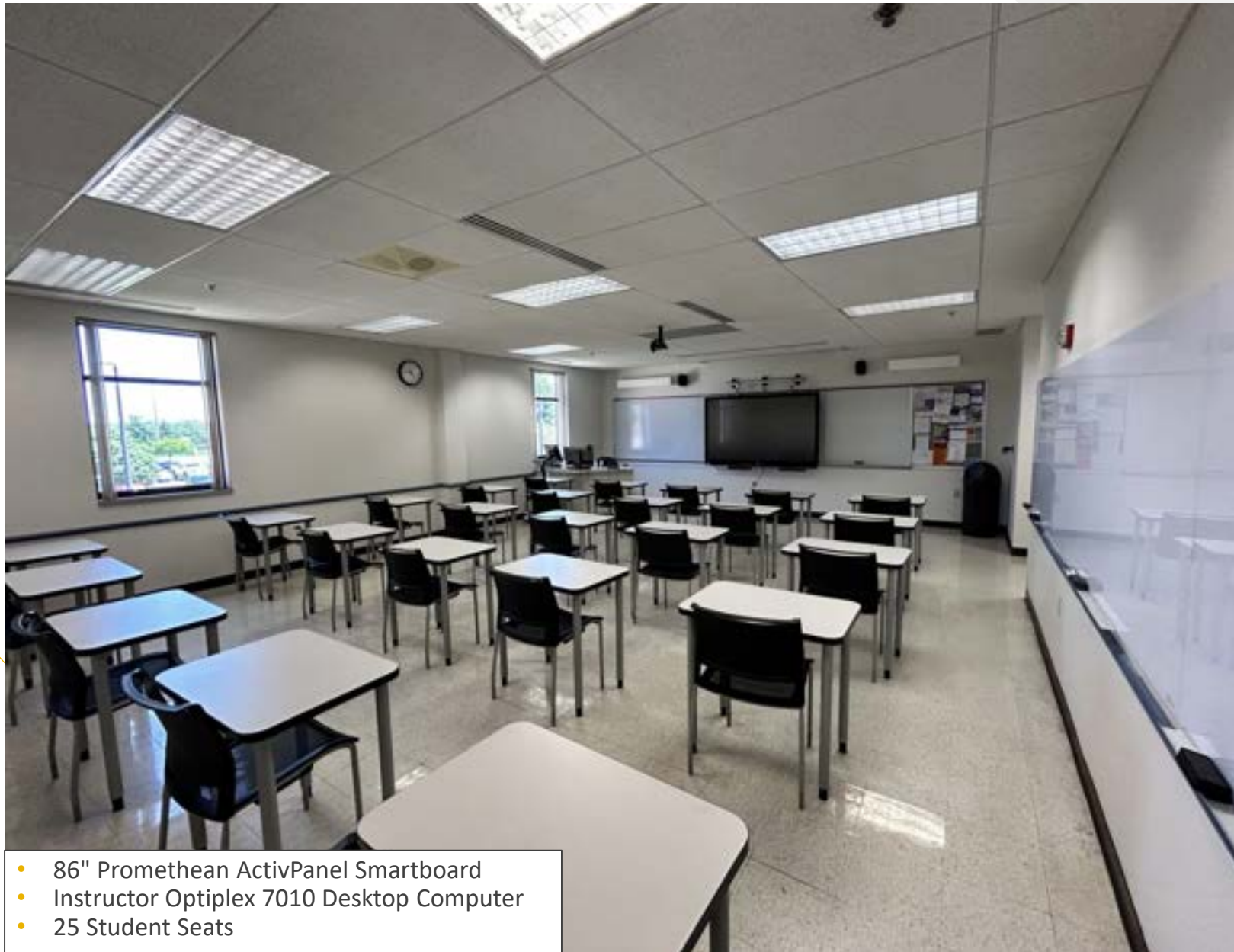
- Seating and tables

BCIS 2140: Networking Computer Classroom



- 86" Promethean ActivPanel Smartboard
- Instructor CPU w/monitor Optiplex 7010 Desktop Computer
- (2) Laserjet Printer
- Precision 7540 BaseLaptop
- (20) Precision 3650 Tower student use

BCIS 2141: Classroom



- 86" Promethean ActivPanel Smartboard
- Instructor Optiplex 7010 Desktop Computer
- 25 Student Seats

BCIS 2142: Classroom



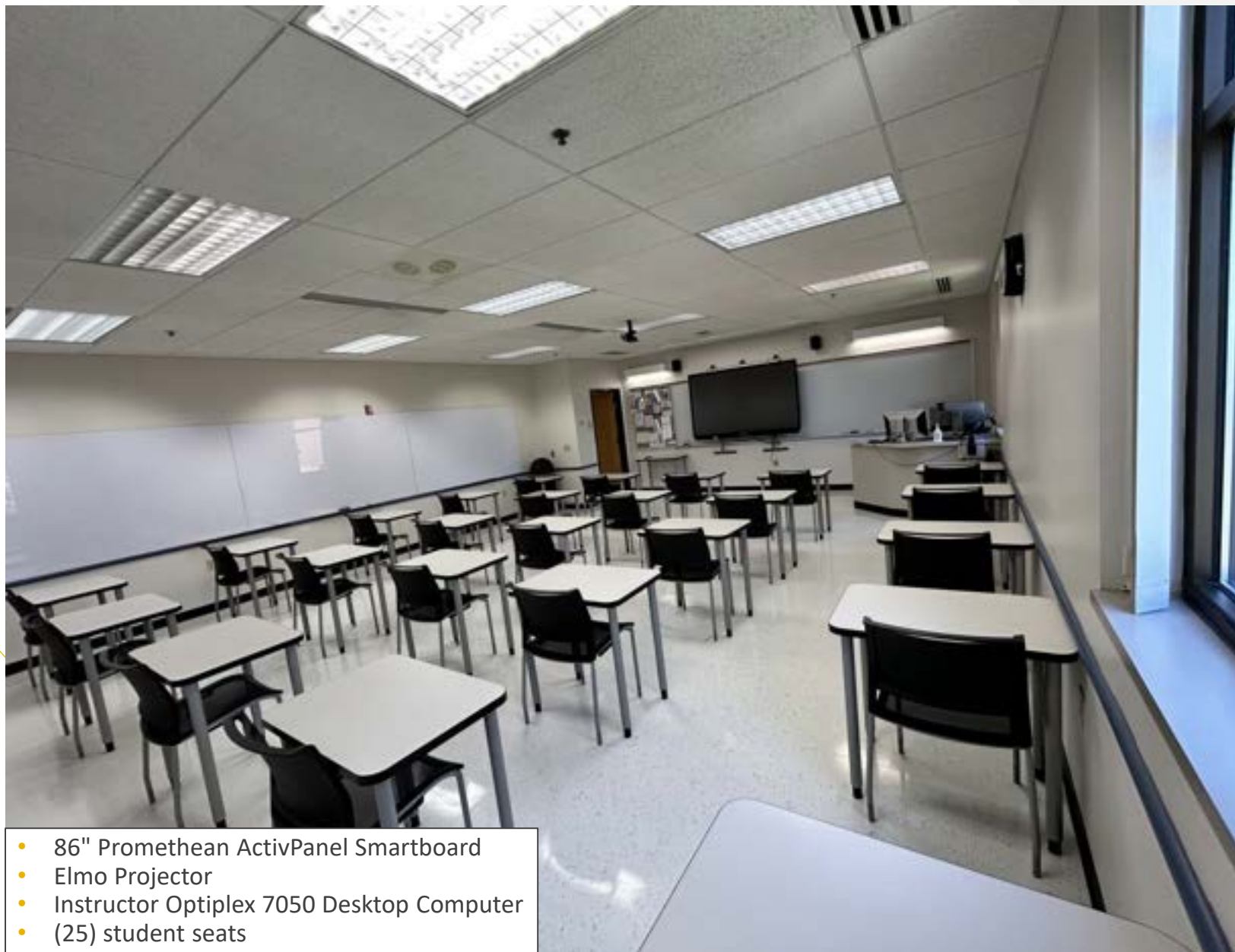
- 86" Promethean ActivPanel Smartboard
- SMART Console
- Elmo Projector
- Instructor Optiplex 7050 Desktop Computer
- (42) Student Seating

BCIS 2143: Classroom



- 86" Promethean ActivPanel Smartboard
- Document Camera U70
- Instructor Optiplex 7050 Desktop Computer
- (36) student seats

BCIS 2144: Classroom



- 86" Promethean ActivPanel Smartboard
- Elmo Projector
- Instructor Optiplex 7050 Desktop Computer
- (25) student seats

BCIS 2150: Computer Aided Design Computer Classroom



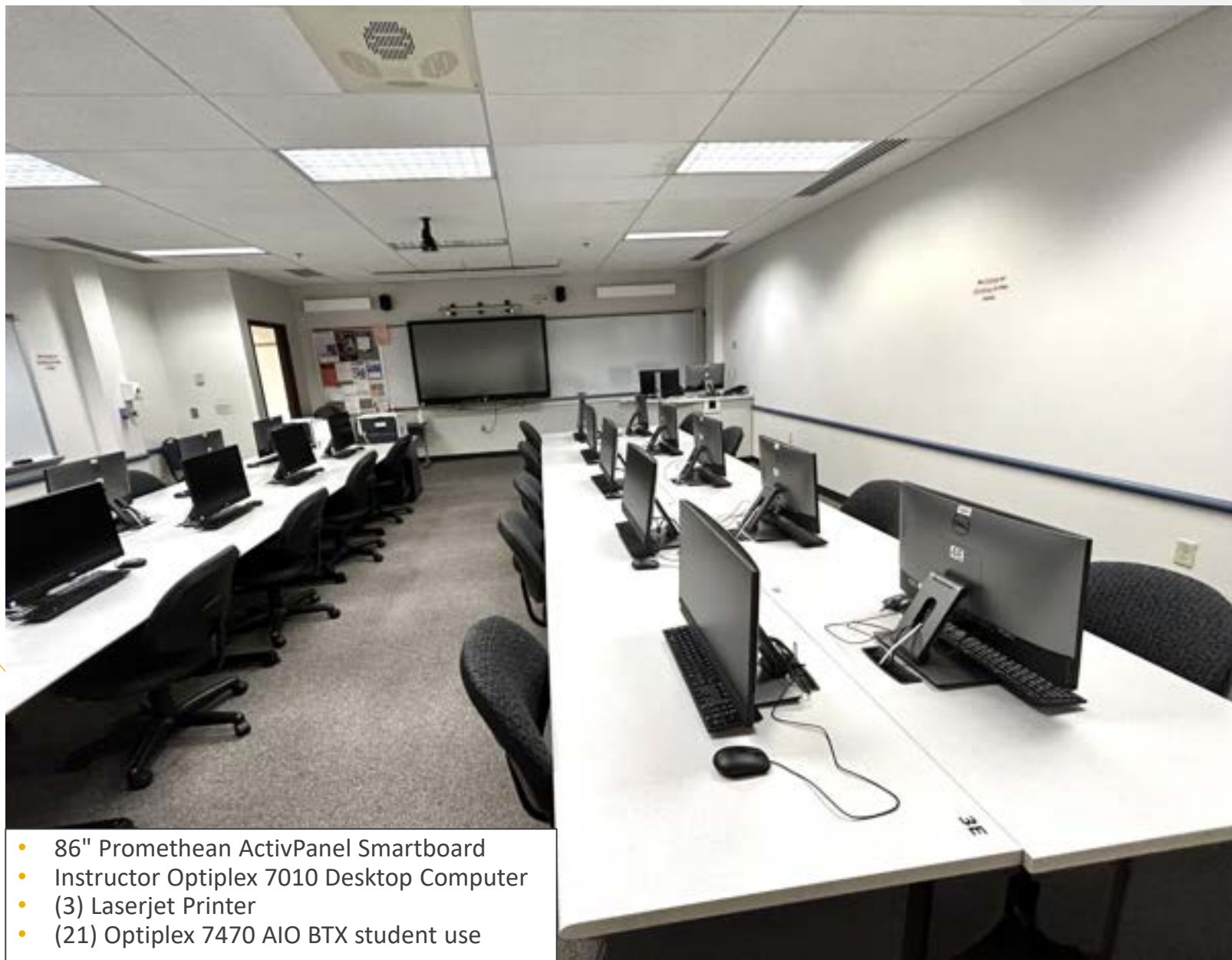
- 86" Promethean ActivPanel Smartboard
- Instructor Optiplex 7010 Desktop Computer
- (3) Laserjet Printer
- Elmo Projector
- Laptop
- (21) Optiplex 7470 AIO BTX student use

BCIS 2151: Computer Classroom



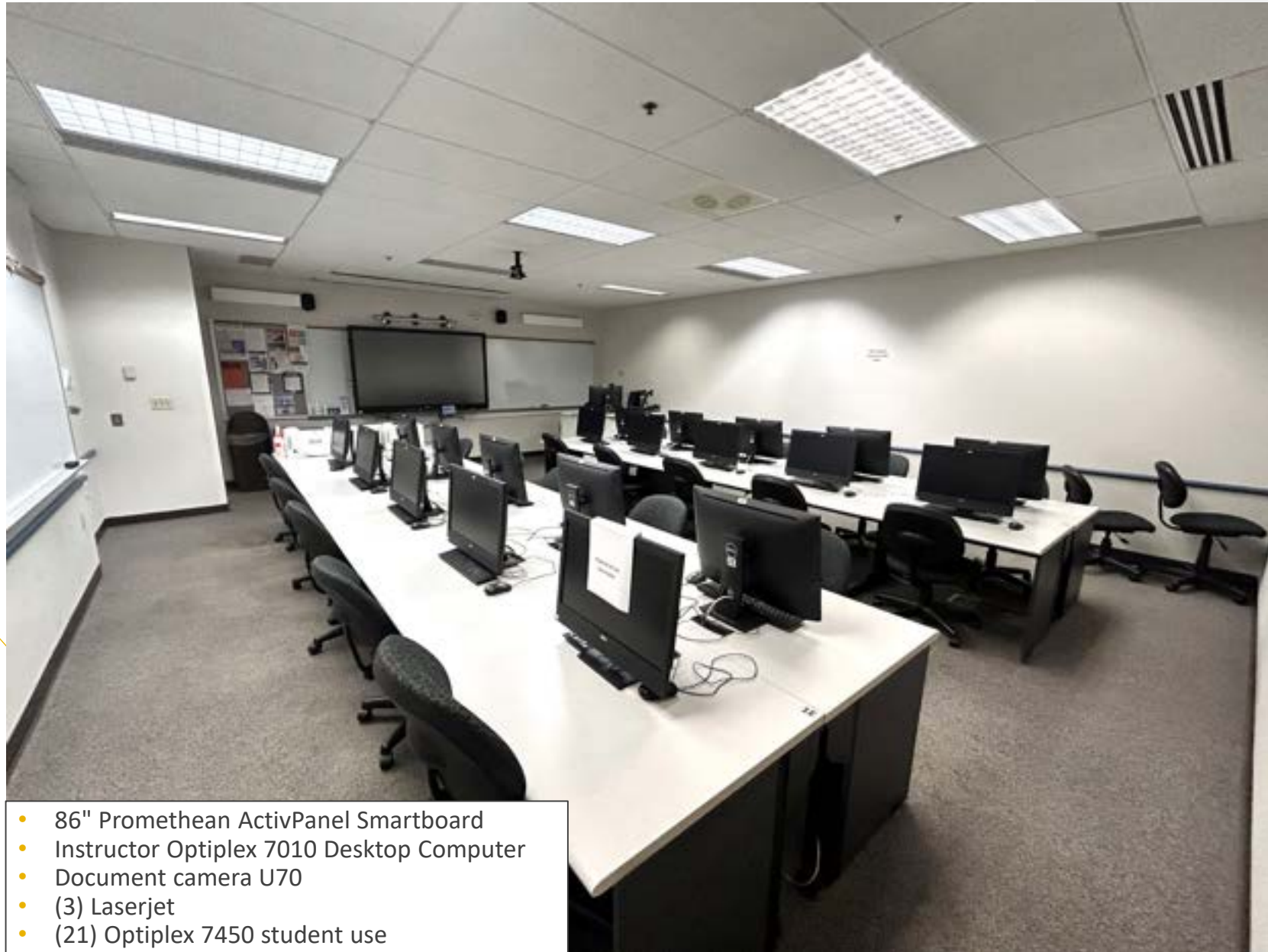
- 86" Promethean ActivPanel Smartboard
- Instructor Optiplex 7010 Desktop Computer
- (3) Laserjet Printer
- Elmo Projector
- (21) Optiplex 7470 AIO BTX student use

BCIS 2152: Computer Classroom



- 86" Promethean ActivPanel Smartboard
- Instructor Optiplex 7010 Desktop Computer
- (3) Laserjet Printer
- (21) Optiplex 7470 AIO BTX student use

BCIS 2154: Computer Classroom



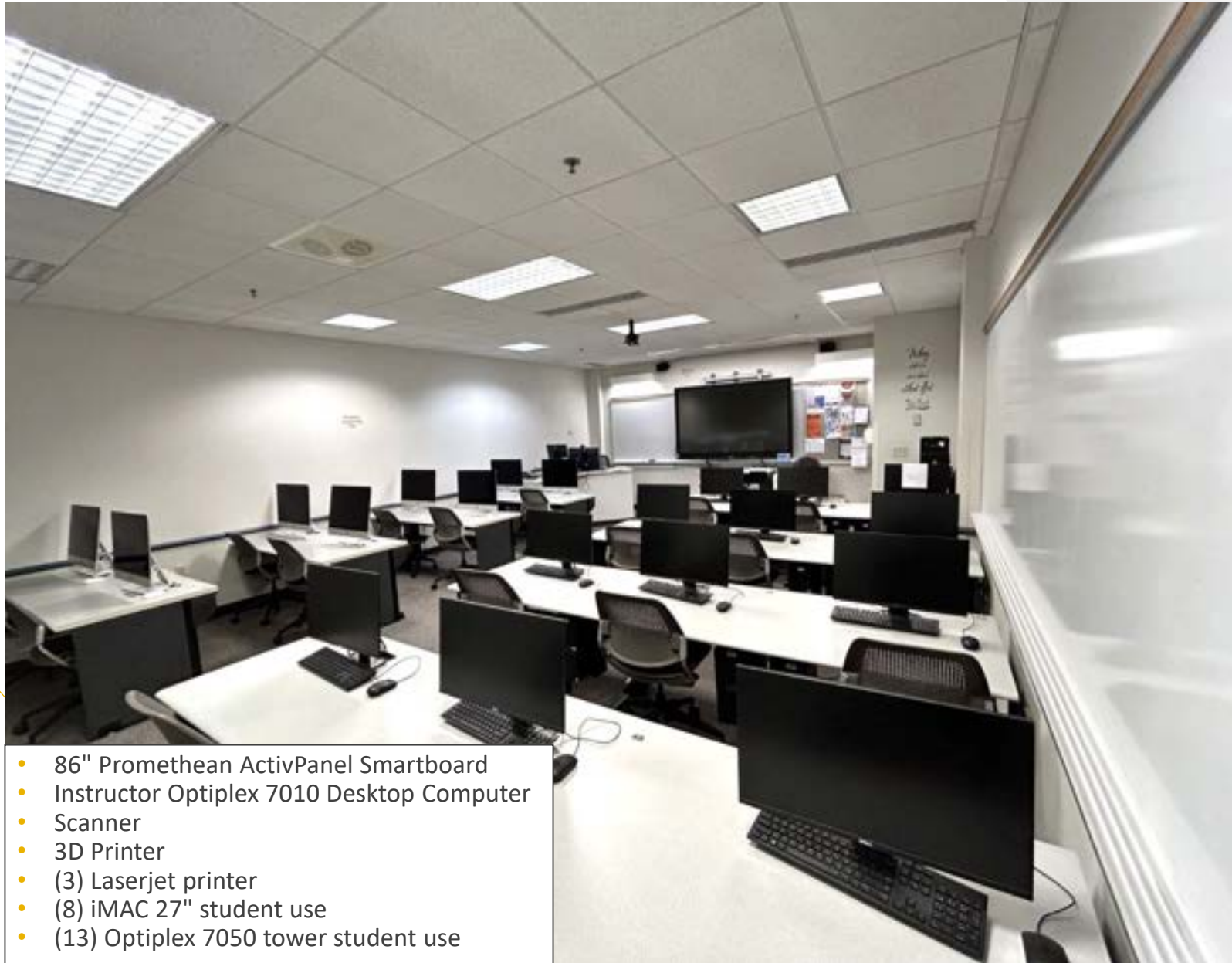
- 86" Promethean ActivPanel Smartboard
- Instructor Optiplex 7010 Desktop Computer
- Document camera U70
- (3) Laserjet
- (21) Optiplex 7450 student use

BCIS 2155: Computer Classroom



- 86" Promethean ActivPanel Smartboard
- Instructor Optiplex 7010 Desktop Computer
- 75" TV
- HDMI Converter
- (2) Laserjet
- (29) Optiplex 7450 student use

BCIS 2156: Computer Classroom



- 86" Promethean ActivPanel Smartboard
- Instructor Optiplex 7010 Desktop Computer
- Scanner
- 3D Printer
- (3) Laserjet printer
- (8) iMAC 27" student use
- (13) Optiplex 7050 tower student use

BCIS 2157: Computer Classroom



- 86" Promethean ActivPanel Smartboard
- Instructor Optiplex 7460 Desktop Computer
- (2) Laserjet Printer
- (20) Optiplex 7460 student use

BCIS 2158: Computer Classroom



- 86" Promethean ActivPanel Smartboard
- Instructor Optiplex 7040 Desktop Computer
- (3) Laserjet Printer
- (20) Precision 3650 Tower CTO student use

BCIS 2159: Computer Classroom



- 86" Promethean ActivPanel Smartboard
- Instructor Optiplex 7050 Desktop Computer
- 21 student use Optiplex 7450 AIO
- (2) Laserjet Printer

BCIS 2160: Classroom



- 86" Promethean ActivPanel Smartboard
- Instructor Optiplex 7050 Desktop Computer
- 42 student seats

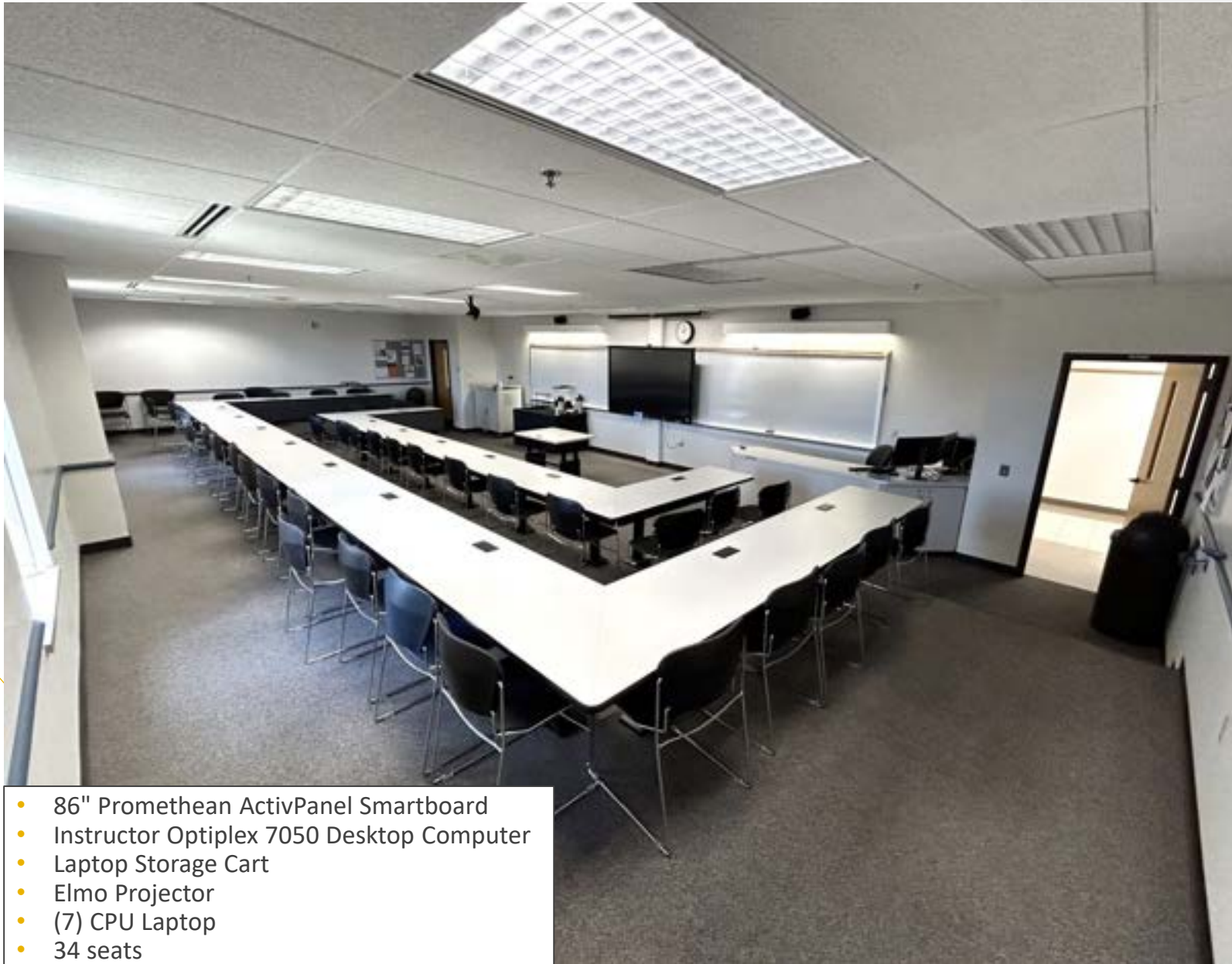
BCIS 2161: Videoconferencing Room



**Under Construction -
New photos coming soon!**

- 86" Promethean ActivPanel Smartboard
- (4) 55" LED TV
- Optiplex 7050
- HD Camera
- Camera Extender
- Ceiling Microphone
- Visualizer HD Video Conference
- Camera HD Video Conferencing

BCIS 2163: Abe Small Seminar Room



- 86" Promethean ActivPanel Smartboard
- Instructor Optiplex 7050 Desktop Computer
- Laptop Storage Cart
- Elmo Projector
- (7) CPU Laptop
- 34 seats

BCIS 2164: Diagnostic Medical Sonography Classroom and Lab

- 86" Promethean ActivPanel Smartboard
- Instructor Optiplex 7050 Desktop Computer
- Ultrasound Bed (2)
- Ultrasound system 65-SE
- (5) 38mm Linear Probe
- (4) 50mm Linear Probe
- (4) Abdominal Probe
- Female Pelvic Ultrasound Phant
- Fetus Ultrasound Exam Phantom
- Transvaginal Probe
- Breast Ultrasound Phantom
- Laserjet Printer
- Ultrasound Table (3)
- Ultrasound Scrotal Phantom



BCIS 2166: Pharmacy Technician Classroom and Lab



- 86" Promethean ActivPanel Smartboard
- Instructor Optiplex 7010 Desktop Computer
- (4) Precision Laptops
- Elmo projector
- Isolation booth
- 40" Ductless Containment Hood
- Pharmacy display

BCIS 2167: Computer Lab



- 86" Promethean ActivPanel Smartboard
- Instructor Optiplex 7010 Desktop Computer
- Laserjet Printer
- (25) Optiplex student computer stations

Index of Facilities

Abe Small Seminar Room	2163	Library	1025
Adjunct Office	2124	Library Instruction Room	1022
Advising, Enrollment Services, Student Records (1115-1142)	1115	Library Staff Office	1014
Break Room	2114	Networking Computer Classroom	2140
Business Administrative Assistant Office	2119	Open Study Area	2134
Business Department	2100	Pharmacy Technician Classroom and Lab	2166
Business Office	1071	Physical Plant Offices (1170-1177)	1170
Career Services (1050-1059)	1050	Research Assistance Center	1030
Circulation Desk	1013	Restroom	1005
Classrooms	2141-2144	Restroom	1006
Classroom	2160	Restroom Assisted Disabled	1198
Classroom	2165	Restroom Men's	1019, 2146
Computer Classrooms	2150-2152	Restroom Unisex	1021
Computer Classrooms	2154-2159	Restroom Women's	1012, 2146
Computer Lab	2167	Silent Study Lounge	1023
Conference/Study Room	1015	Stairwell/ Emergency Service Area	2162
Conference/Study Room	1016	Stairwell/Sitting Area	1003
Copy Room	2101	Student Employment (1035-1043)	1035
Dean's Office (vacant)	2109	Student Lounge Area	1008
Diagnostic Sonography Classroom and Lab	2164	Student Study Area and Seating	2134
Disability and Access Center (1145-1149)	1145	Student Study Area and Seating	2136
Faculty Offices	2102-2108	Vending Vestibule	2137
Faculty Offices	2110-2113	Vestibule	2147
Faculty Offices	2117-2118	Vet Success Counselor	1156
Faculty Offices	2120-2122	Veteran Services (1035-1043)	1035
Financial Aid Technical Offices (1155, 1160-1164)	1155	VetSuccess Counselor	1052
Financial Aid, Veteran Services, & Student Employment (1035-1043)	1035	Video Conferencing/ Lecture Room	2161
IT Offices	2116, 2123	Welcome Foyer	1001/1002
		WIOA Services (1050-1059)	1050